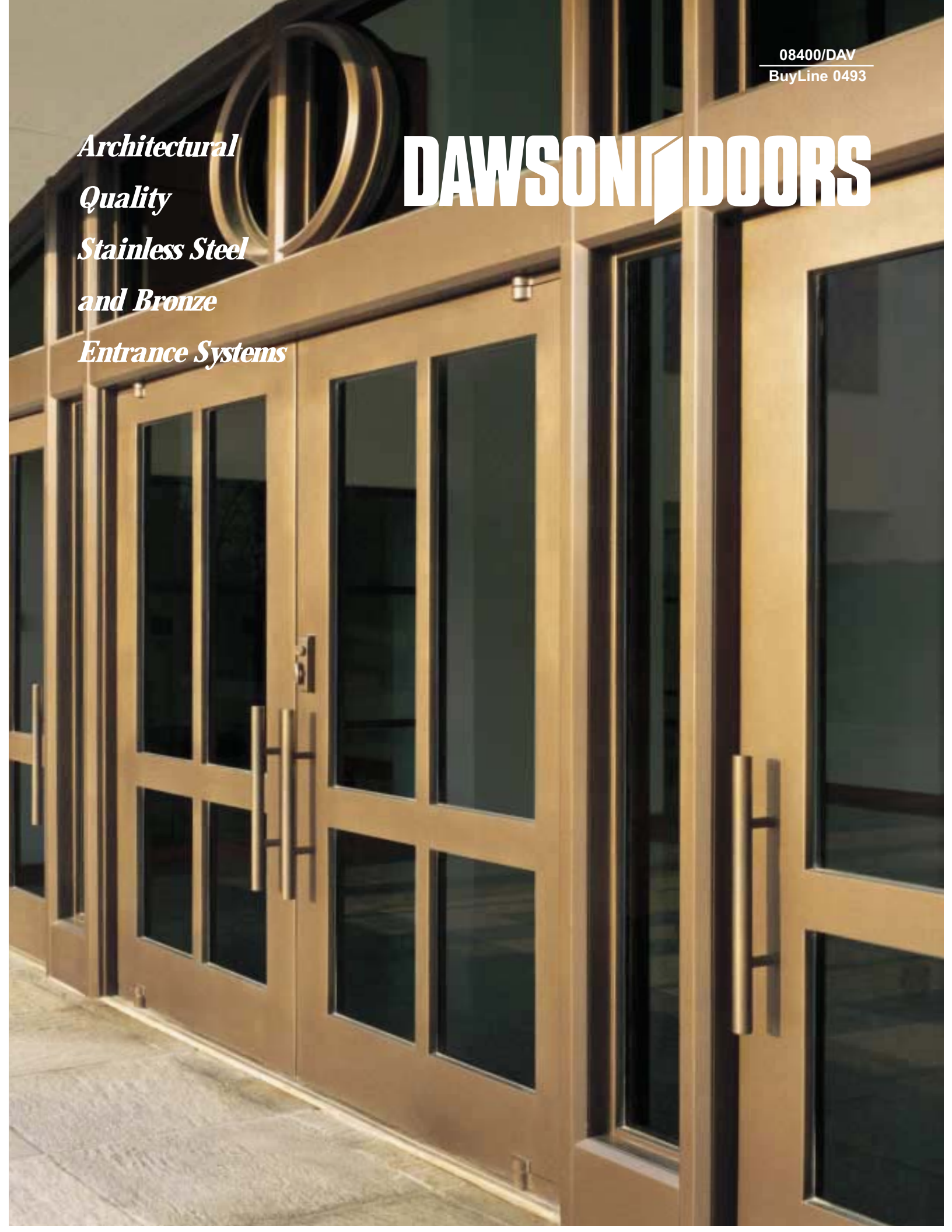


08400/DAV
BuyLine 0493

*Architectural
Quality
Stainless Steel
and Bronze
Entrance Systems*

DAWSON DOORS



DAWSON DOORS



Tufts Dentistry

Since 1946, Dawson, the leading manufacturer of high quality architectural products, has offered Custom, Designer, Balanced and Clad Aluminum doors and entrances.

Manufactured from the highest quality materials, every Dawson door and entrance is designed and fabricated to enhance the aesthetic appeal, while meeting the architect's specifications.

Behind every Dawson door is over 50 years of experience which is evident in the exacting workmanship found in every facet of the door's construction – from internal reinforcing ...to preparation for required hardware... to weatherstripping all four edges of each door.



PB Sullivan

Custom Series Doors and Entrances are blanked from one sheet of material creating a seamless door face to meet architect's specifications.

Designer Series Doors and Entrances offer true rail and stile construction for an economical, high quality alternative to Custom Series.

Clad Aluminum Doors, Entrances and Curtainwall offer an economical choice to solid Dawson Doors such as Custom and Designer Series.

Balanced Doors, which are state-of-the-art, comply with the strictest building codes and A.D.A. guidelines.



Adelphia Cable

**Dawson Doors –
making a grand
entrance.**

*front cover photo:
Marist College, Poughkeepsie, New York
Architect: Perry Dean Rogers and Associates*

Superior Courthouse Hartford, Connecticut • Architect: The Malmfeldt Associates



CUSTOM SERIES DOORS AND FRAMES



Integral weatherstripping at edge of stiles

Each interior and exterior pan is blanked from a single sheet of metal

Three-year warranty

3/16" wall thickness at critical areas using a 3-tier metal thickness

Doors and frames have "seamless" corner construction with no exposed joinery

Bronze doors have bronze reinforcement while stainless steel doors have stainless steel reinforcement

Integral adjustable weatherstripping at sill and head



The Dawson Custom Series incorporates a one-piece metal skin welded to a continuous metal frame structure. The result is a truly seamless door face with a flawless superior finish.

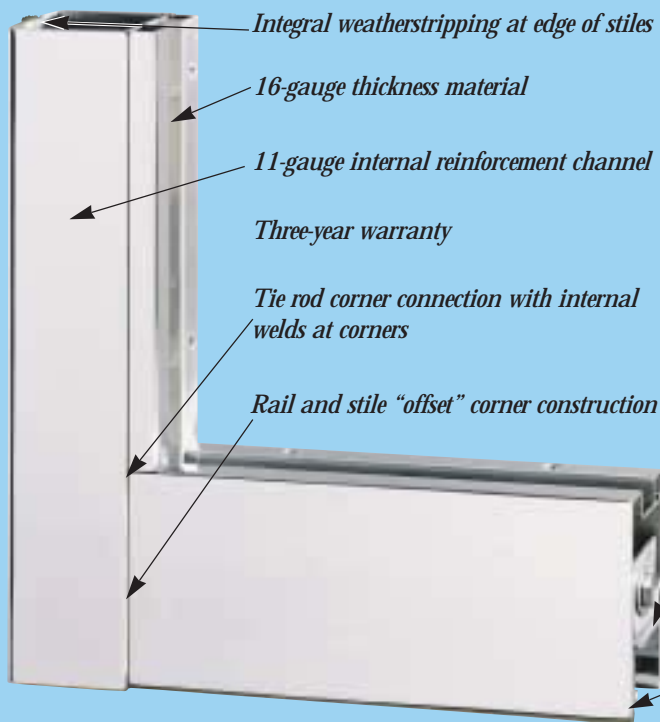
Satisfying the most exacting specifications with enhanced swing function, suppressed sound transmission and durable construction, the Custom Series enters into a new dimension for a new millennium.

- 13-, 14- or 16-gauge thickness or as specified
- Adjustable head and sill weatherstripping without exposed fasteners
- Interior glazing stops, screw-applied or pocket glazing available using no exposed fasteners
- High-impact polycarbonate honeycomb material laminated within the internal metal frame structure for suppressed sound and greater rigidity
- Custom sized to match design
- Hardware as specified including balanced
- Grilles, muntins, extrusions and castings are available to meet design requirements
- Available in most any finish including #4 satin, #6 satin, #8 polished mirror, or non-directional (angel hair)

Stainless steel for Custom Series doors is AISI Type 304 or 316 with 13-, 14- or 16-gauge frames and doors. Bronze for all doors is CDA Alloy 464 with a minimum thickness of 0.090" on frames and 0.060" on doors. Other metals available. Please consult factory.

Citadel #1, Orlando, Florida
Architect: Smallwood, Reynolds, Stewart, Stewart and Associates
photo top right
Marriot at Society Center, Cleveland, Ohio
Architect: Cesar Pelli & Associates, Inc. and Glover, Smith, Bode, Inc.

DESIGNER SERIES DOORS AND FRAMES



Stainless steel doors have stainless steel reinforcement while bronze doors have bronze reinforcement

Adjustable head and sill weatherstripping using concealed fastening attachment



Dawson's Designer Series entrance system offers the architect and contractor an economical, high quality alternative to Custom Series installations. The Designer Series is available in the same fine finishes as Dawson's Custom Series, offering an aesthetically superb entrance for any budget.

- 11-gauge channel reinforcement for a 3/16" overall wall thickness at critical areas
- Interior glazing stops, screw applied or pocket glazing available using no exposed fasteners
- High-impact polycarbonate honeycomb material laminated within the internal metal frame structure for sound and rigidity
- Custom sized to match design
- Hardware as specified including balanced
- Grilles, muntins, extrusions and castings are available to meet design requirements
- Available in most any finish including #4 satin, #6 satin, #8 polished mirror, or non-directional (angel hair)

Stainless steel for Designer Series doors is AISI Type 304 with typically 16-gauge frames and doors. Bronze for all doors is CDA Alloy 464 with a minimum thickness of 0.090" on frames and 0.060" on doors. Other metals available. Please consult factory.

*photo top left
Wildwood Parkway Office Building, Atlanta, Georgia
Architect: Smallwood, Reynolds, Stewart, Stewart and Associates*

*photo top right
Georgia Pacific Corporate Office,*

*photo right
Tufts School of Dentistry, Boston, Massachusetts*



CLAD ALUMINUM DOORS AND FRAMES

Paris Hotel & Casino, Las Vegas, Nevada • Architect: Bergman-Walls & Youngblood also the Hilton Corporation



Cladding bronze or stainless steel over aluminum is a cost effective approach versus Dawson's solid Custom or Designer Series doors and entrances. Dawson prepares the anodized aluminum substrate with special cleaning agents providing a superior adhesion of the very high bond 3M tape. Exacting laser cut material is what separates Dawson's clad aluminum entrances and curtainwall from our competition. Dawson's abilities are unmatched with the possibilities of metals such as copper, nickel silver, commercial bronze 220 or colored titanium coated stainless steel.

- Quality base aluminum doors and frames with anodized finish
- 22-gauge stainless steel or bronze cladding using 3m VHB acrylic adhesive transfer tape
- Hairline joints of face material at rail and stile connections
- One piece face of door with no exposed joints may be available please consult factory (see photos of Paris Hotel)
- Glazing stops are also clad for a uniform look with the door and frame
- Custom sized to match design
- Hardware as specified
- Grilles, muntins, extrusions and castings are available to meet design requirements
- Available in most any finish including #4 satin, #6 satin, #8 polished mirror, or non-directional (angel hair)
- One-year warranty

Paris Hotel & Casino, Las Vegas, Nevada
Architect: Bergman-Walls & Youngblood also the Hilton Corporation



BALANCED DOOR HARDWARE



RSA Tower, Montgomery, Alabama • Architect: PH&J Architects, Inc.



Guide Assembly/Check Mechanism
(shown without cover plate)

***The Dawson
Balanced Door***
where technology
meets tradition

Top and Bottom Arm Assembly



By incorporating the latest, most innovative technology, the Dawson Balanced Door features exceptional attention to detail, ensuring lasting quality for generations.

The Dawson Balanced Door complies with the strictest building codes and A.D.A. guidelines, while satisfying the most sophisticated design sensibilities.

- Available as either Custom Series or Designer Series door and frame construction
- 13-, 14- or 16-gauge thickness as specified
- A.D.A. compliant
- Custom sized to match design
- Grilles, muntins, extrusions and castings are available to meet design requirements
- Ten-year door, frame and hardware warranty

Balanced door hardware includes:

- Cast hydraulic check mechanism
- All adjustments made in head frame
- Door guide is cast stainless steel
- Metal reinforced mechanical back check
- Self-aligning needle bearings at all pivot points
- Cast stainless steel arms used on stainless doors
- Cast bronze arms used on bronze doors

DARE TO COMPARE

Balanced Door Arms:

All manufacturers produce one-piece cast arms and door pivots. Dawson manufactures both stainless steel and bronze castings to match the door material.

Arm Bearings:

Dawson uses self-aligning needle bearings in all door pivots, not plastic sleeve bearings.

Hinge Shaft:

Dawson uses a 1.9" diameter steel tube with 3/16" minimum wall section.

Guide Box:

The Dawson guide box is made of one piece cast 304 stainless steel. The stainless steel is 50% stronger, more than twice as hard and will not discolor due to corrosion. The Dawson guide box has a larger cross sectional area for strength and incorporates a trim plate to match the frame material.

Checking Unit:

Dawson utilizes an LCN cast check mechanism and warrants it for 10 years. The physical characteristics of the LCN make it a superior

check mechanism. LCN is considered the best manufacturer of checking devices in the world and has been thoroughly tested and approved in the industry.

Spring Tension Adjustment:

The Dawson product has all the controls for spring tension, swing speed and latch speed protected in the header. This location provides protection from dirt and corrosion, while allowing easy access for adjustments in the guide channel without removing the door from the opening. Others use a gear box located below the threshold grade for spring tension adjustment. This location exposes the mechanism to dirt, water, salt and other contaminants which can cause corrosion and make adjustment difficult.

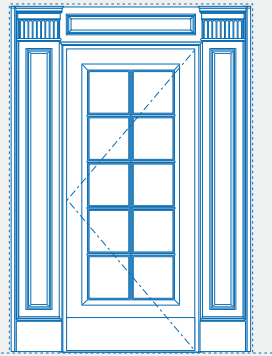
Conclusion:

The Dawson design incorporates ease of installation and industry accepted warranty while reaching new levels of quality in the areas of bearings, material match, ease of adjustment and strength.

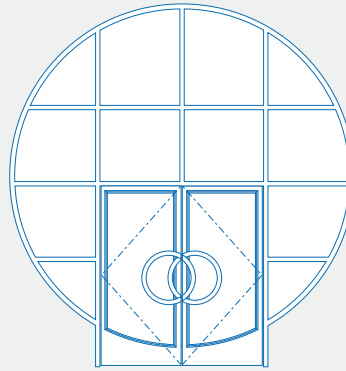
DOOR STYLES ANY CONFIGURATION



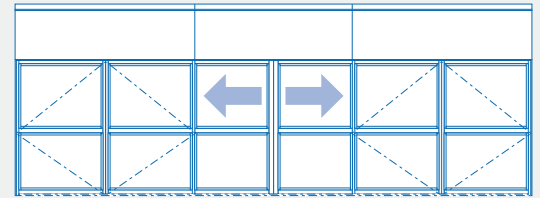
Marist College, Poughkeepsie, New York • Architect: Perry Dean Rogers and Associates



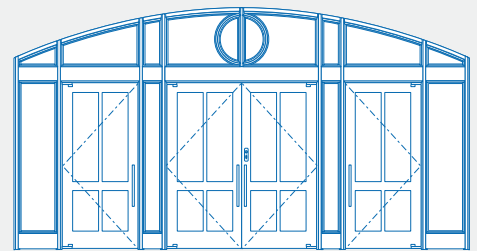
SINGLE DOOR
Severance Hall
Cleveland, OH



DOUBLE DOORS
Seaview Elementary
Salton City, CA



SLIDING DOORS
JFK Airport New York, NY



BALANCED DOORS
Marist College Poughkeepsie, NY

PRODUCT GUIDE

Custom Series Entrances & Sliding Doors

Materials – Stainless Steel, Bronze, Galvanized Steel, Special Metals, Formed Aluminum

Construction – Seamless Corner

Warranty – 3 Years

Designer Series Entrances & Sliding Doors

Materials – Stainless Steel, Bronze, Galvanized Steel, Special Metals, Formed Aluminum

Construction – Offset Corner

Warranty – 3 Years

Flush Doors & Frames

Materials – Stainless Steel, Bronze, Galvanized Steel, Special Metals, Formed Aluminum

Construction – Seamless Corner

Warranty – 3 Years

Balanced Doors & Frames

Materials – Stainless Steel, Bronze, Galvanized Steel, Special Metals, Formed Aluminum

Construction – Seamless & Offset Corner

Warranty – 10 Years

Clad Aluminum Doors, Frames & Curtainwall

Materials – Stainless Steel, Bronze, Special Metals

Construction – Offset Corner

Warranty – 1 Year

Fixed Window/Curtainwall

Materials – Stainless Steel, Bronze, Special Metals

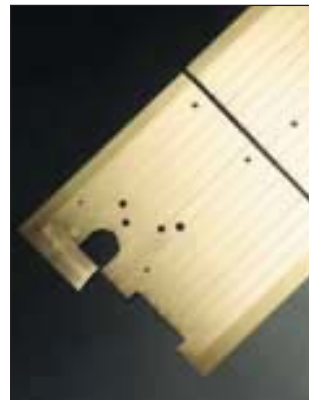
Construction – Seamless & Offset Corner

Warranty – 3 Years

Thresholds

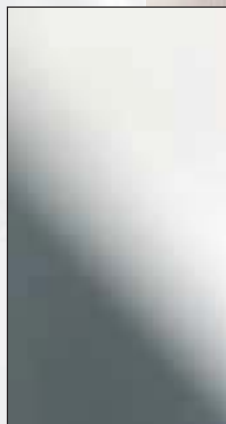
Materials – Stainless Steel, Bronze, Extruded Aluminum

THRESHOLDS CUSTOM



Custom thresholds can be fabricated from 16 ga. Type 304 stainless steel or 0.60" thick naval brass. Thresholds are designed with attached support channels, and can be manufactured 1/4" or 1/2" high, up to 120" long (one piece), to any specified width. Finish is #4 Satin. Woodscrew and rawl plug type fastener preparation is approximately 16" on center. Hardware preparation, return miters and door jamb notches are available.

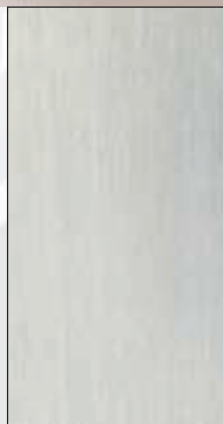
FINISHES STANDARD ALLOYS



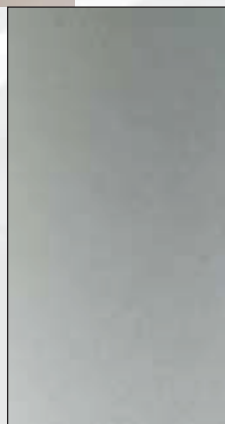
#8 Mirror Polished
Stainless Steel



#4 Satin
Stainless Steel



#6 Satin
Stainless Steel



Glass Bead Finish
Stainless Steel



Non-Directional
Stainless Steel



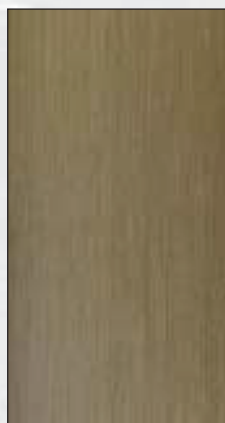
#8 Mirror Polished
Brass



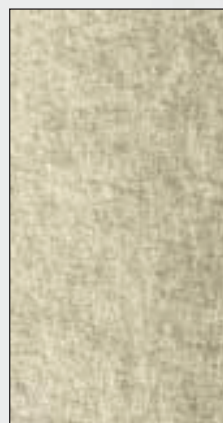
#4 Satin
Brass



Medium Statuary
Brass



Dark Statuary
Brass



Non-Directional
Brass

Dawson Doors entrances are manufactured using the following standard alloys:
Type 304 Stainless Steel, Type 316 Stainless Steel; Bronze: Type 464 Alloy Naval Brass.

The above photos are representations of our finishes. Please consult the factory to obtain actual finish samples prior to final selection. Additional finishes available; please call sales department for special options. Due to printing reproduction limitations, please consult the factory for mirrored finish samples.



PERRY JOHNSON
REGISTRARS, INC.



ISO 9002:1994



Accredited by the
RvA, Dutch Council
for Accreditation



DAWSON DOORS

Division of Dawson Metal Company, Inc.

825 Allen Street • PO Box 0278

Jamestown, NY 14702-0278

Telephone: 716.664.3811 • Fax: 716.661.3722

e-mail: dawson@dawsondoors.com www.dawsondoors.com

2001-01

