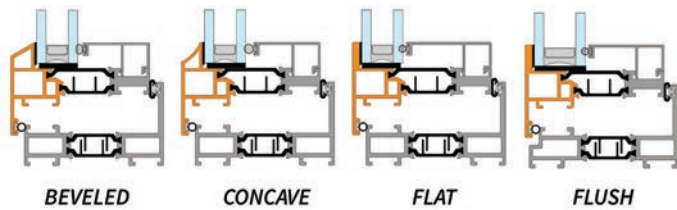


# GT6 WINDOW SYSTEM

Graham's new GT6 Window System is a family of casement, projected and fixed windows available in various frame depths. It utilizes common frame parts to allow numerous configuration variations and glazing styles. Each frame depth offers three glazing profile options: beveled, concave, flat, and a flush vent option.

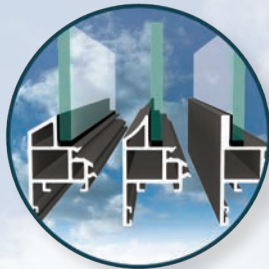


**Casement      Projected      Fixed**

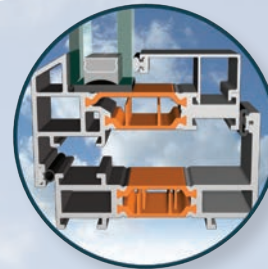
Multiple frame depths are achieved by using different thermal breaks. By increasing the size of the thermal break, we can increase thermal efficiency. This allows a wide range of thermal performance to meet your specifications. All models incorporate advanced thermal strut technology for optimum thermal efficiency and low U-values. The GT6 product line achieves AAMA AW ratings with minimum air infiltration, high water resistance and impressive design pressures.

## FEATURES & BENEFITS

Glazing Profile Options



Deep Thermal Break



Euro-Groove Construction



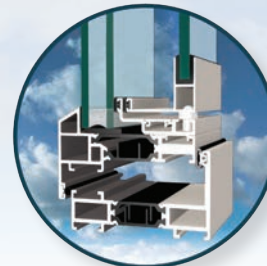
Dual Finish Capability



Slim Sightline Option



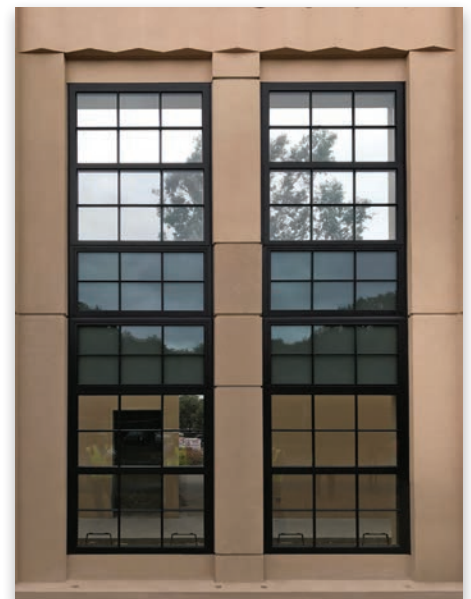
Guardian Panel Option



# GT6 WINDOW SYSTEM

Model	Beveled	Concave	Flat	Flush	U-Value* Range
GS6600 2-1/2" Frame					0.44 - 0.52
GT6700 3" Frame					0.39 - 0.46
GT6800 3-3/8" Frame					0.25 - 0.37
GX6800 3-9/16" Frame					0.22 - 0.34

\* U-values vary depending on glazing packages selected, glazing profiles, and operational style



Stanford University, Escondido Village  
Graduate Residences (GT6700 Fixed/Awning)