

# HYBRID Curtain Wall

HYBRID

## Product Manual Curtain Wall

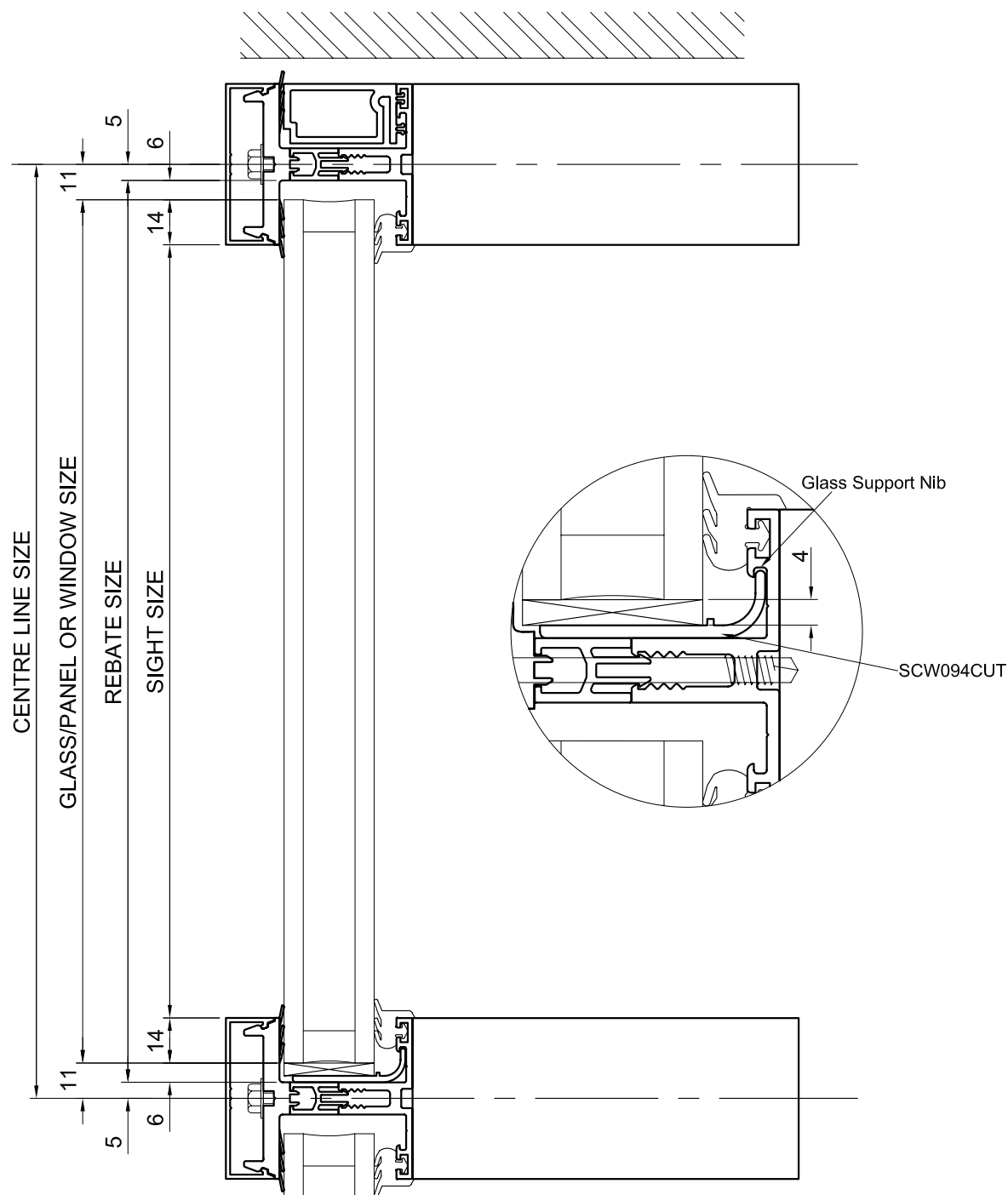


C.T.W. Engineered  
Glazing Systems



# Hybrid Curtain Wall

General Infill Deductions

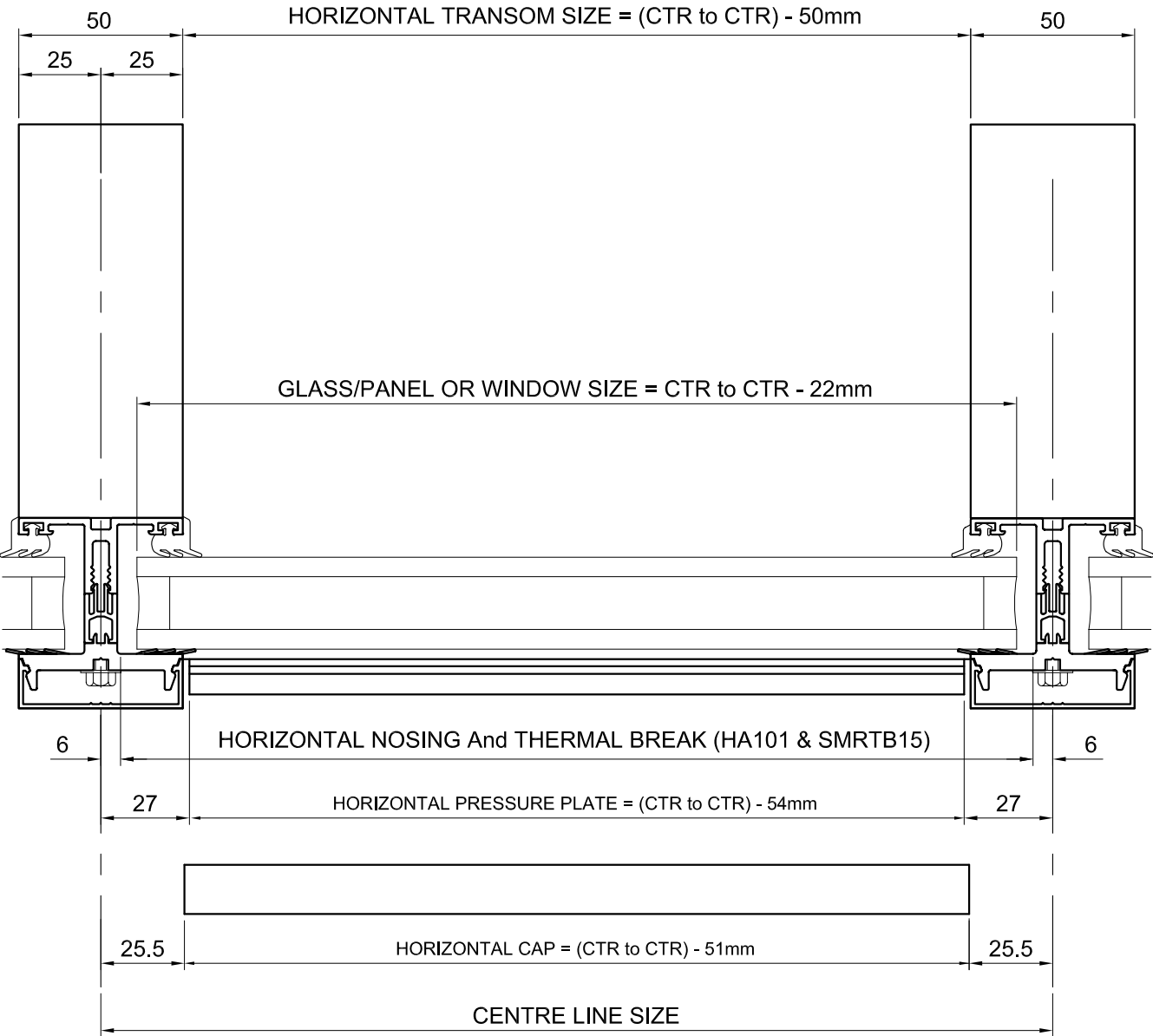


# Hybrid Curtain Wall

## Horizontal Rail Deductions

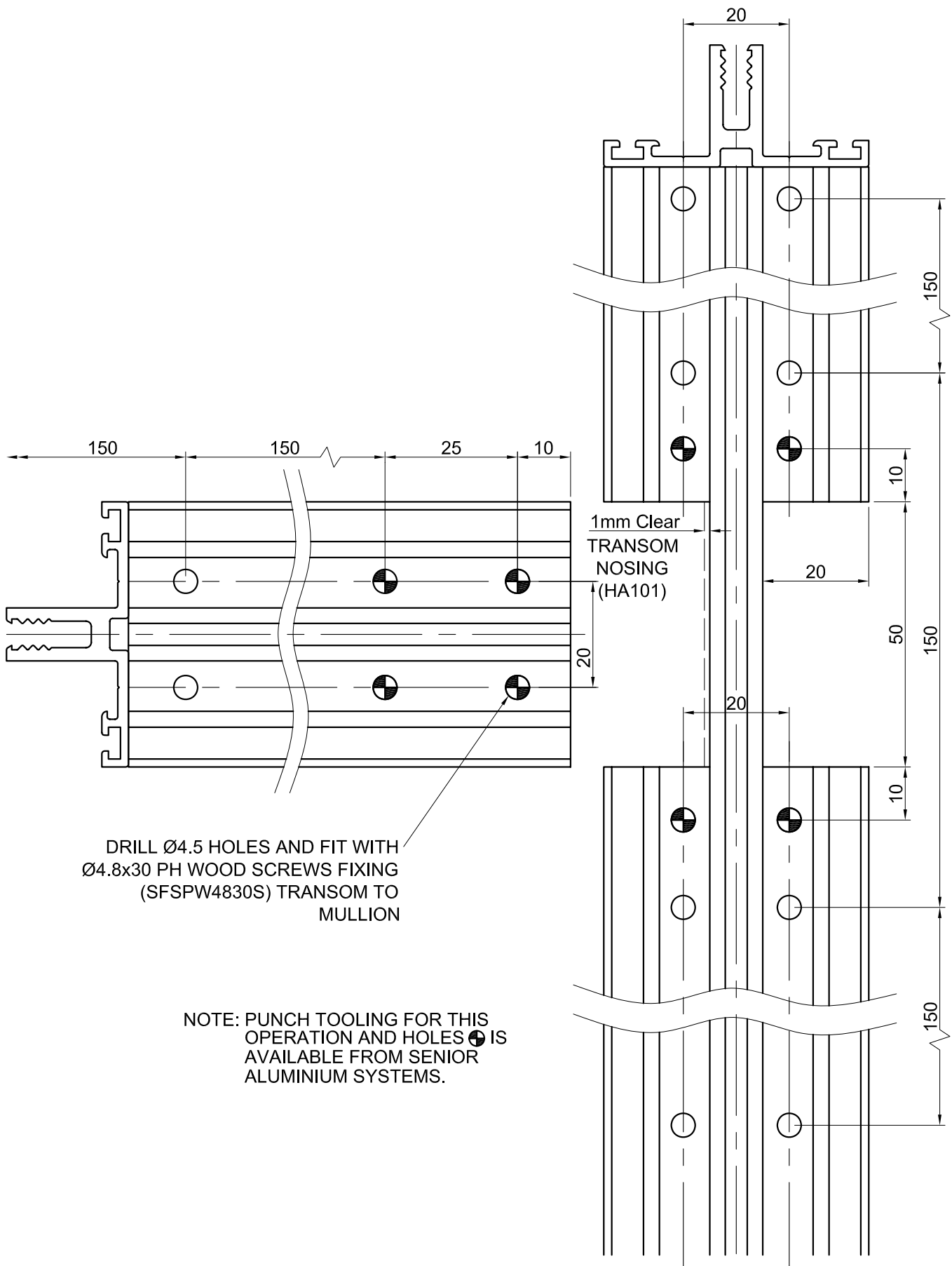
HCW.D.102

06.09



# Hybrid Curtain Wall

## Drilling & Machining Details For Transom/Mullions HA101

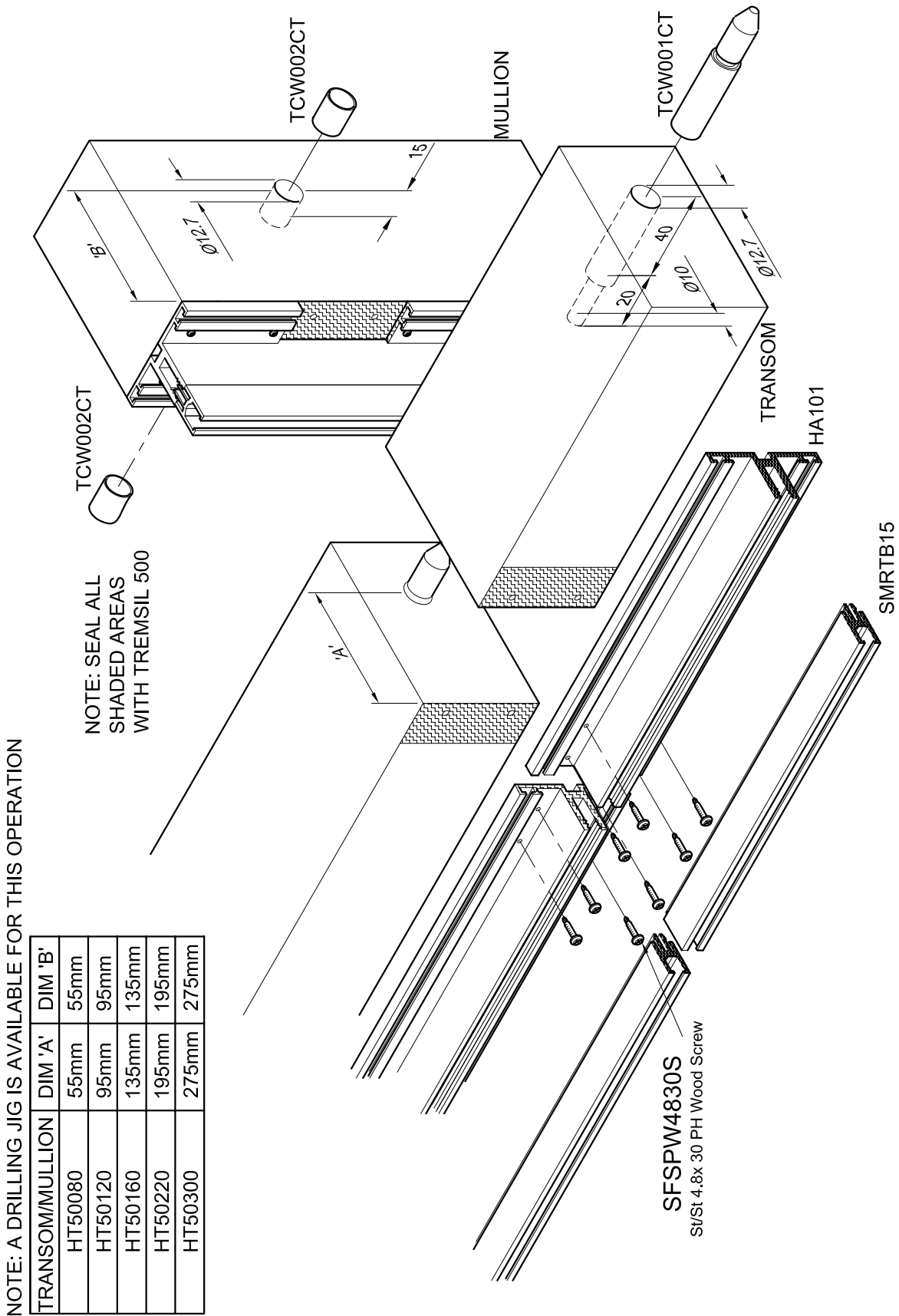


# Hybrid Curtain Wall

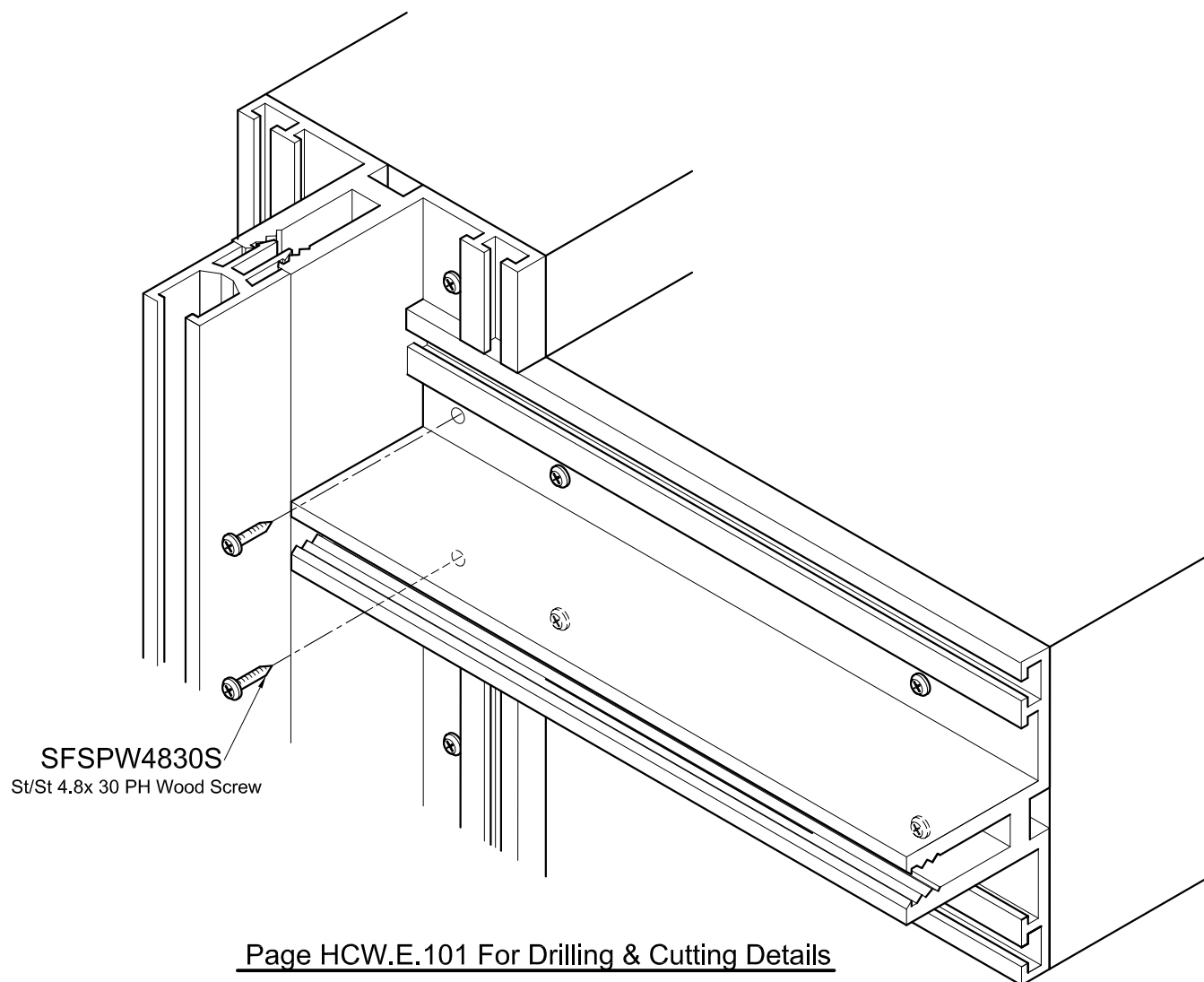
HCW.E.102

# Transom to Mullion Preparation

10.08



TRANSOM/MULLION	DIM 'A'	DIM 'B'
HT50080	55mm	55mm
HT50120	95mm	95mm
HT50160	135mm	135mm
HT50220	195mm	195mm
HT50300	275mm	275mm

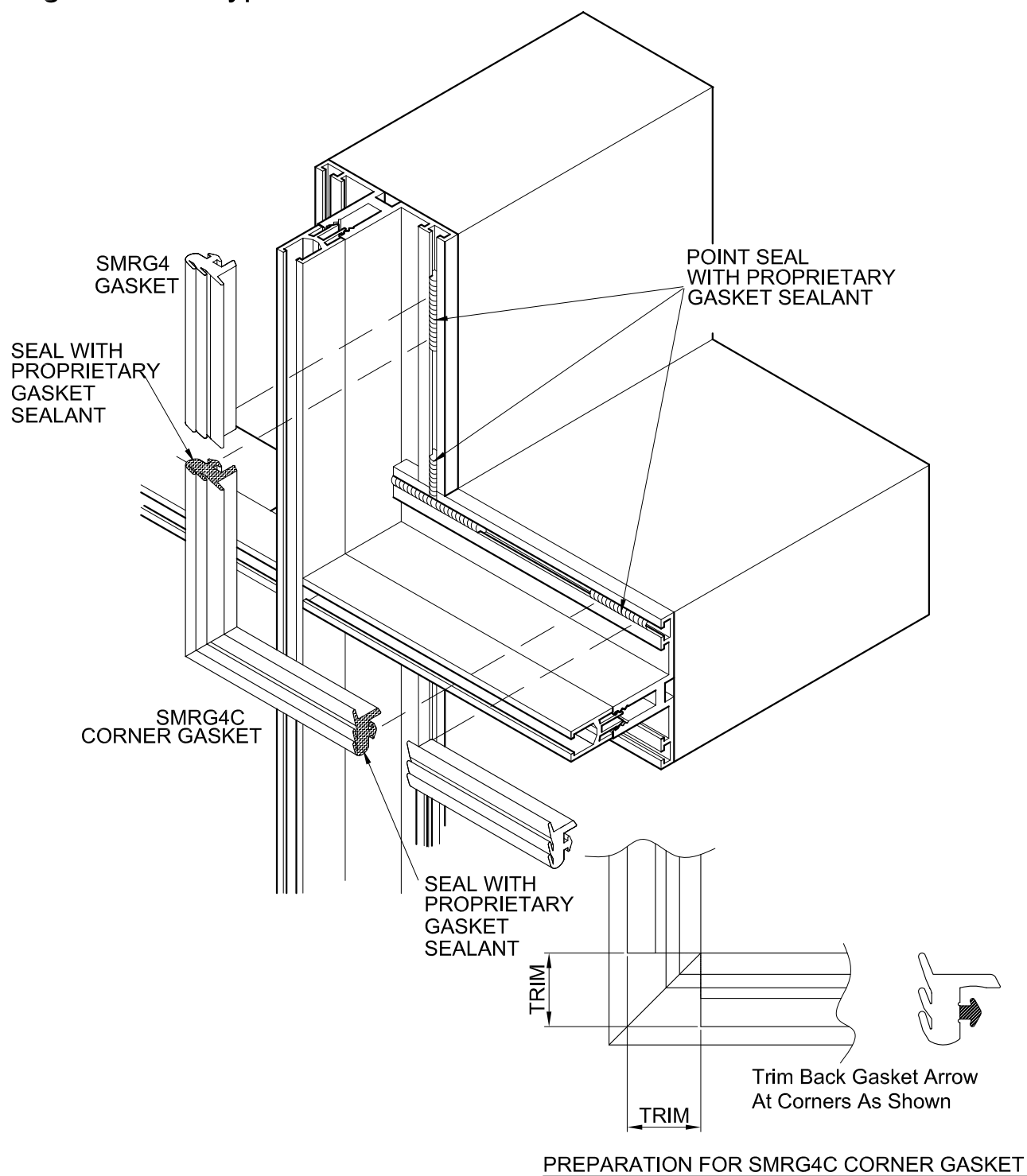


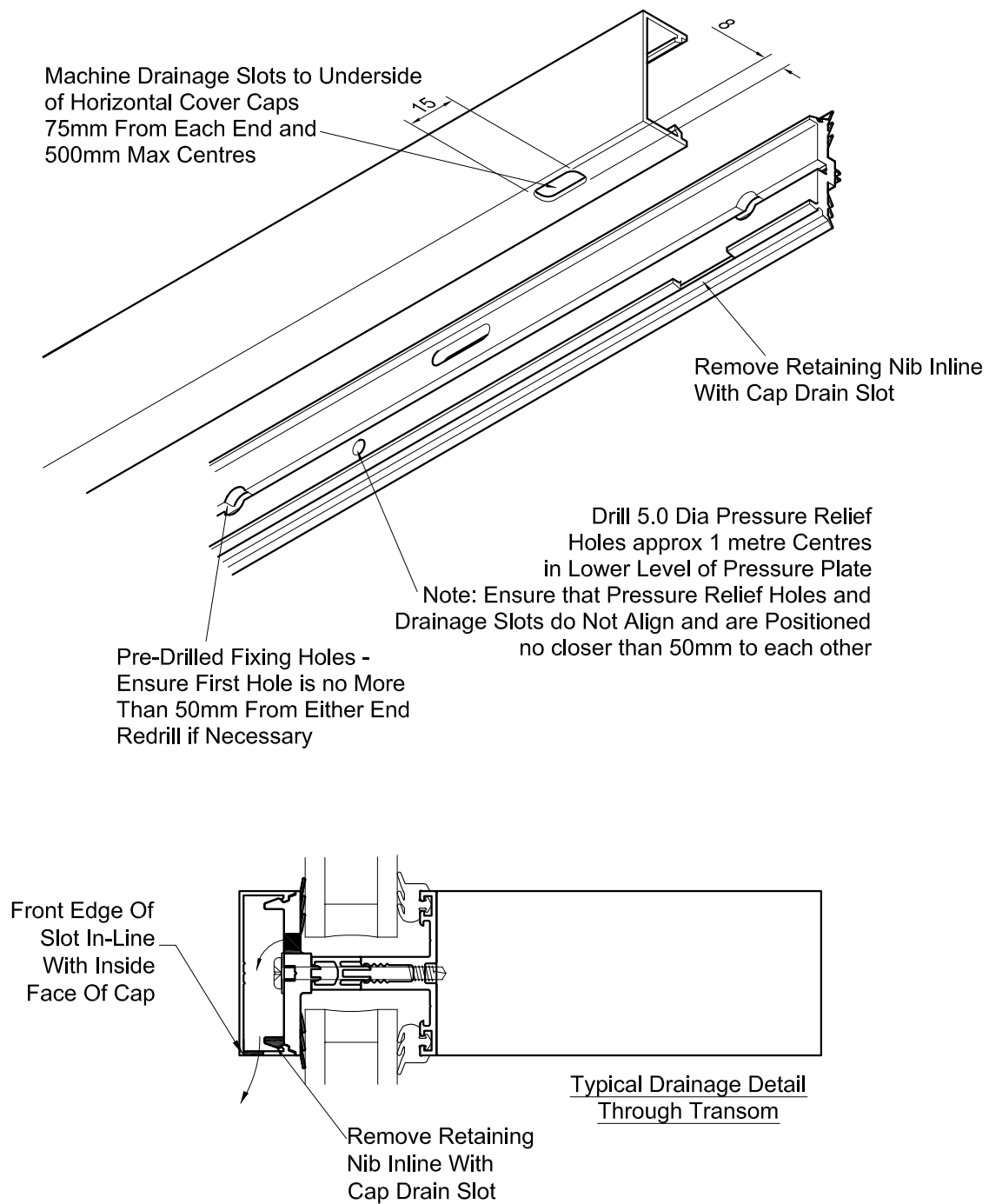
# Hybrid Curtain Wall

HCW.E.104

Pointing Detail At Typical Corner

10.08





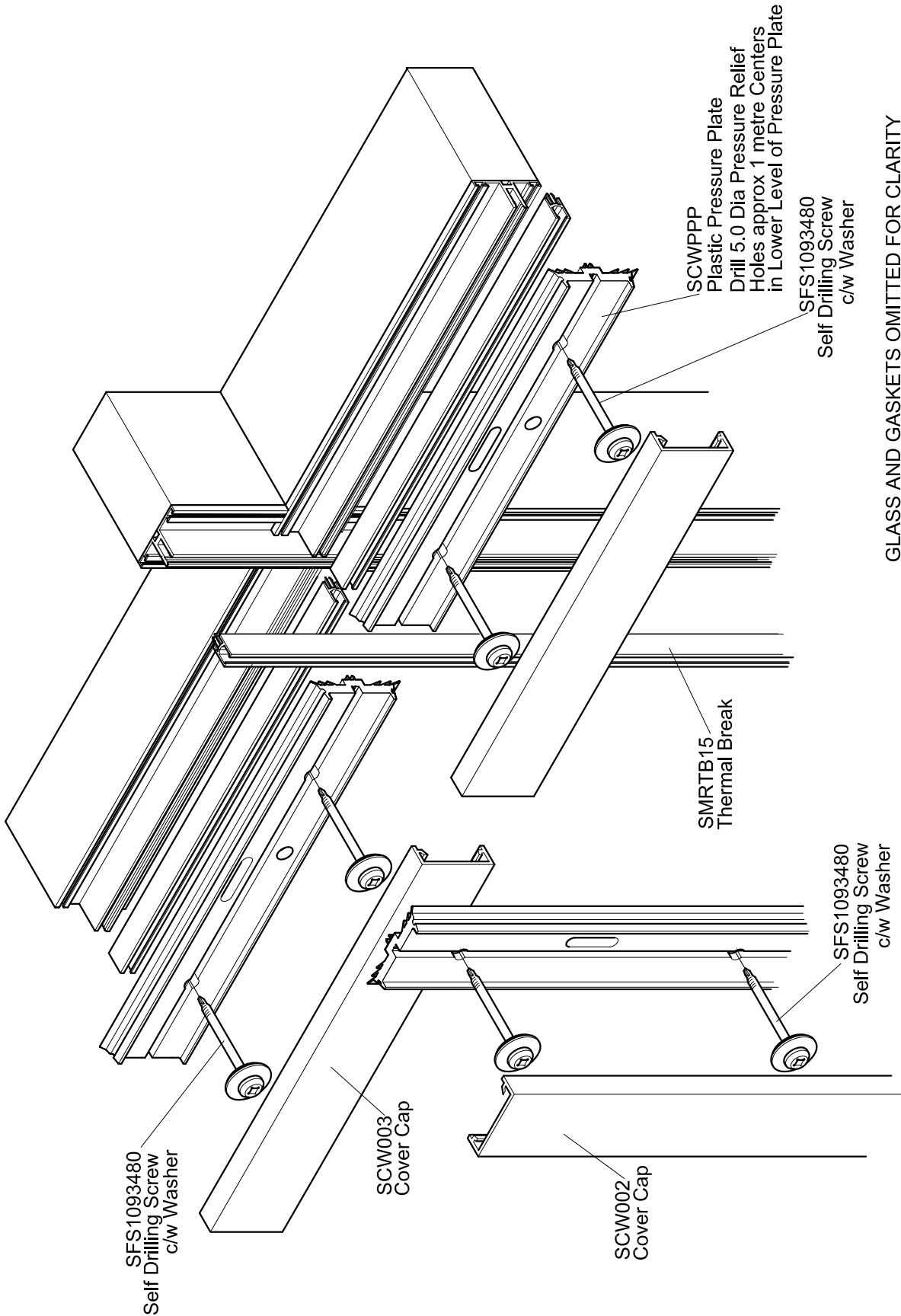


# Hybrid Curtain Wall

HCW.E.106

## Preperation Details - Pressure Plate Drilling

10.08

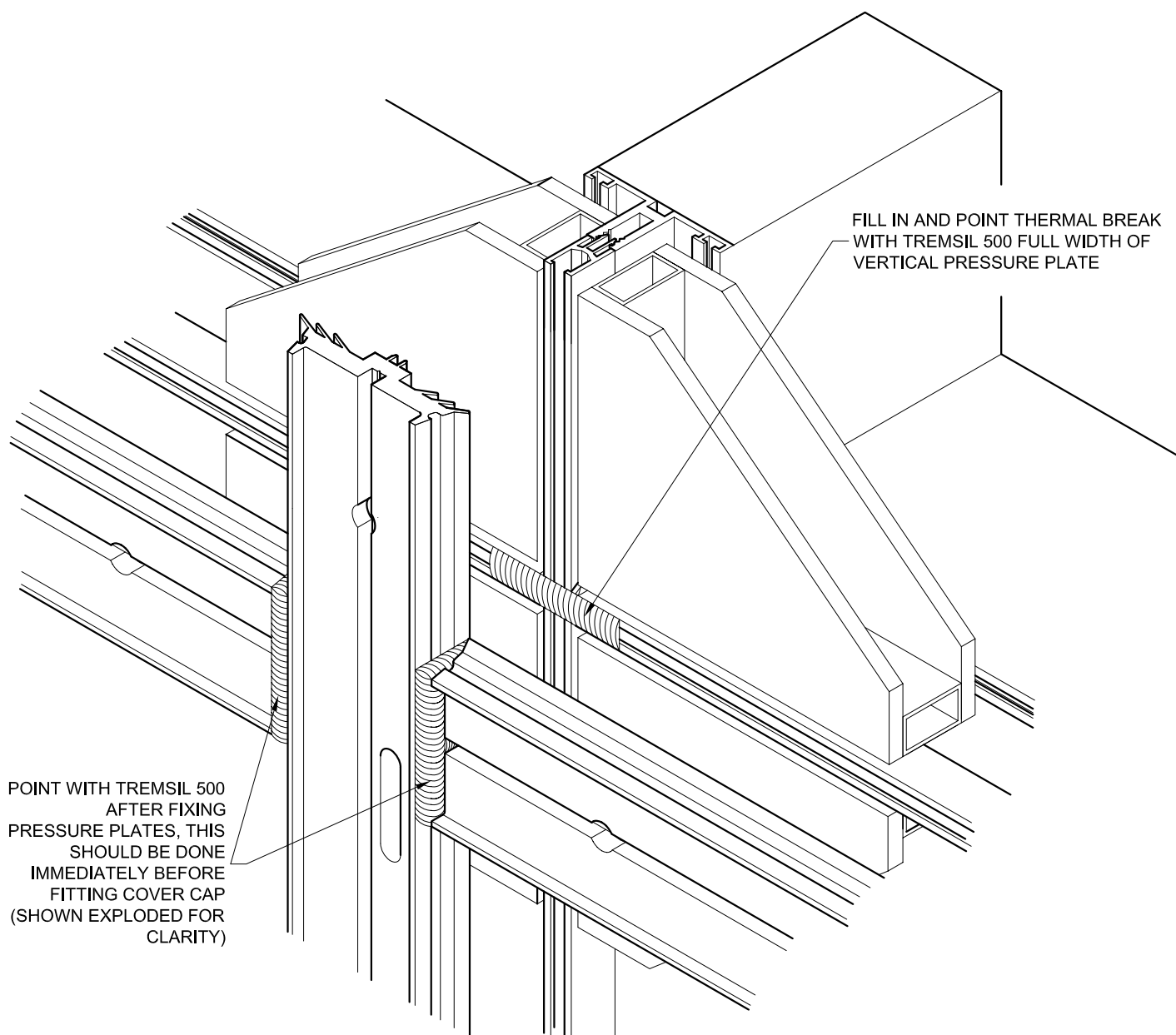


GLASS AND GASKETS OMITTED FOR CLARITY  
TORQUE SETTING 6Nm



# Hybrid Curtain Wall

## Sealing Detail At Cruciform Joint

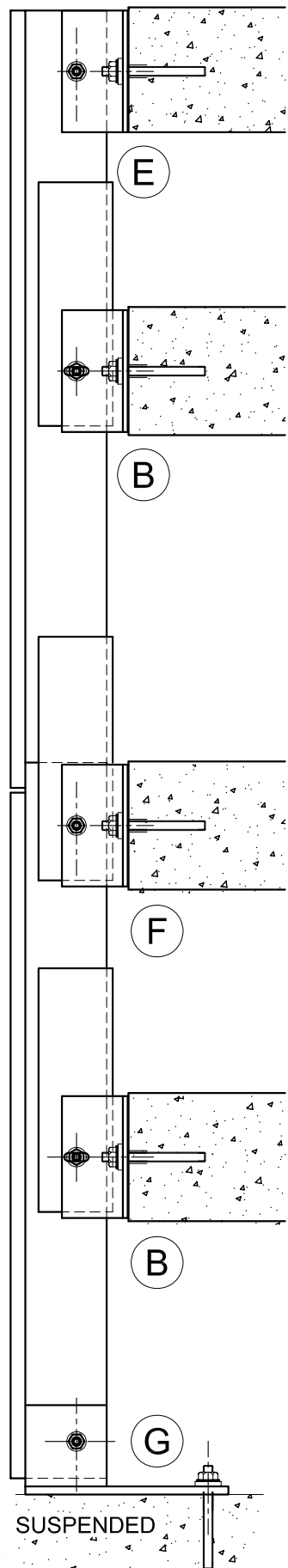
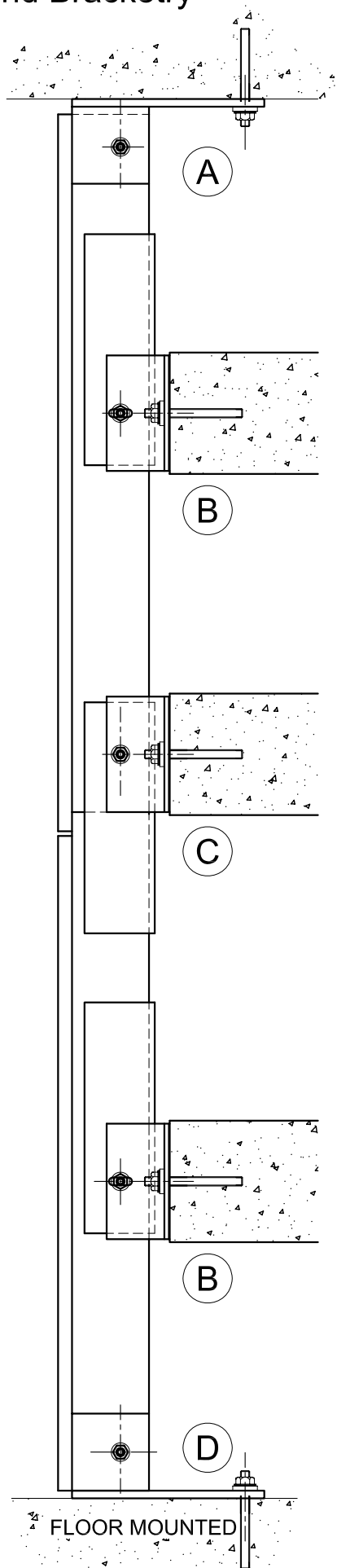


# Hybrid Curtain Wall

## Joints and Bracketry

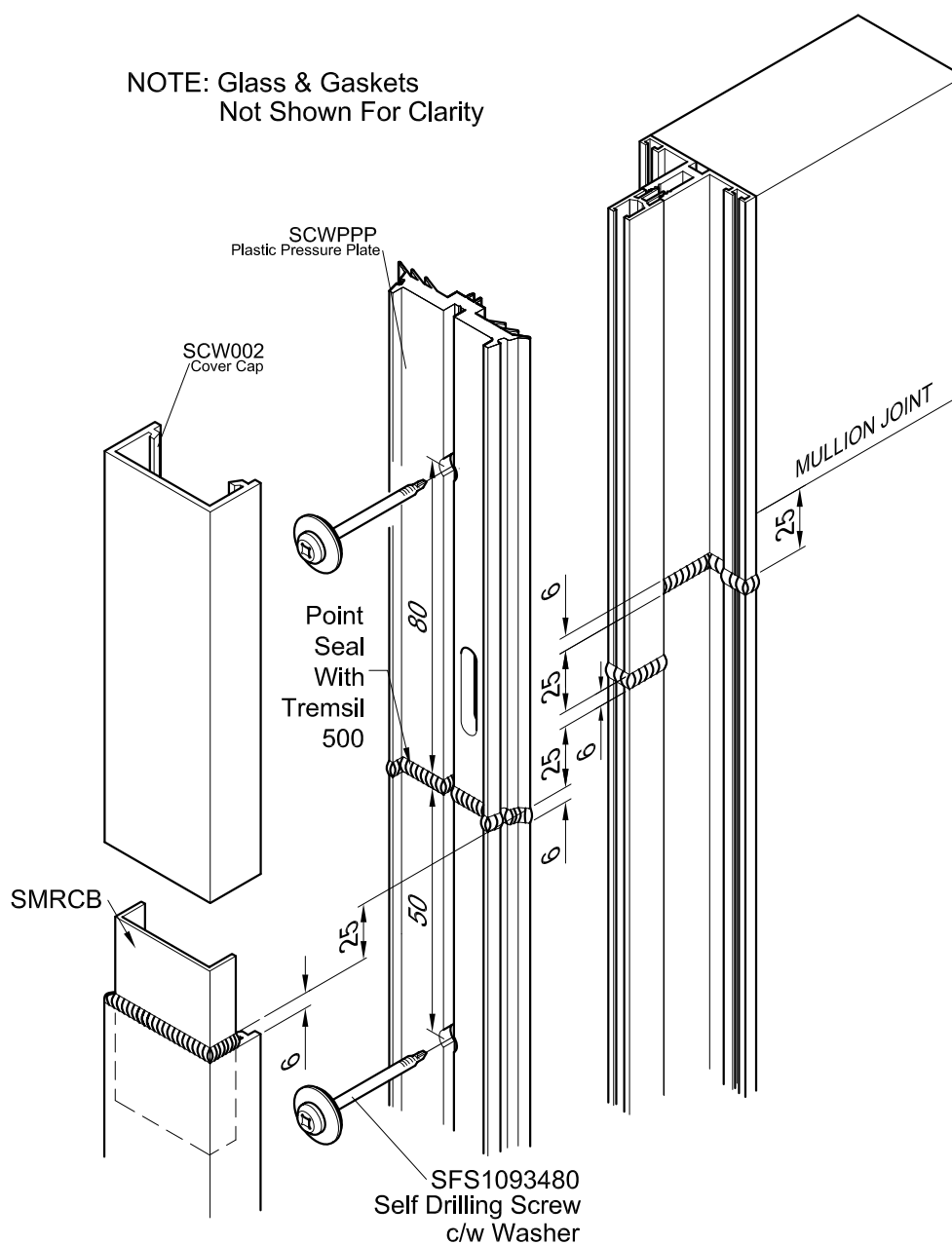
HCW.E.108

10.08



# Hybrid Curtain Wall

## Pointing Detail At Expansion Joint In Nosing

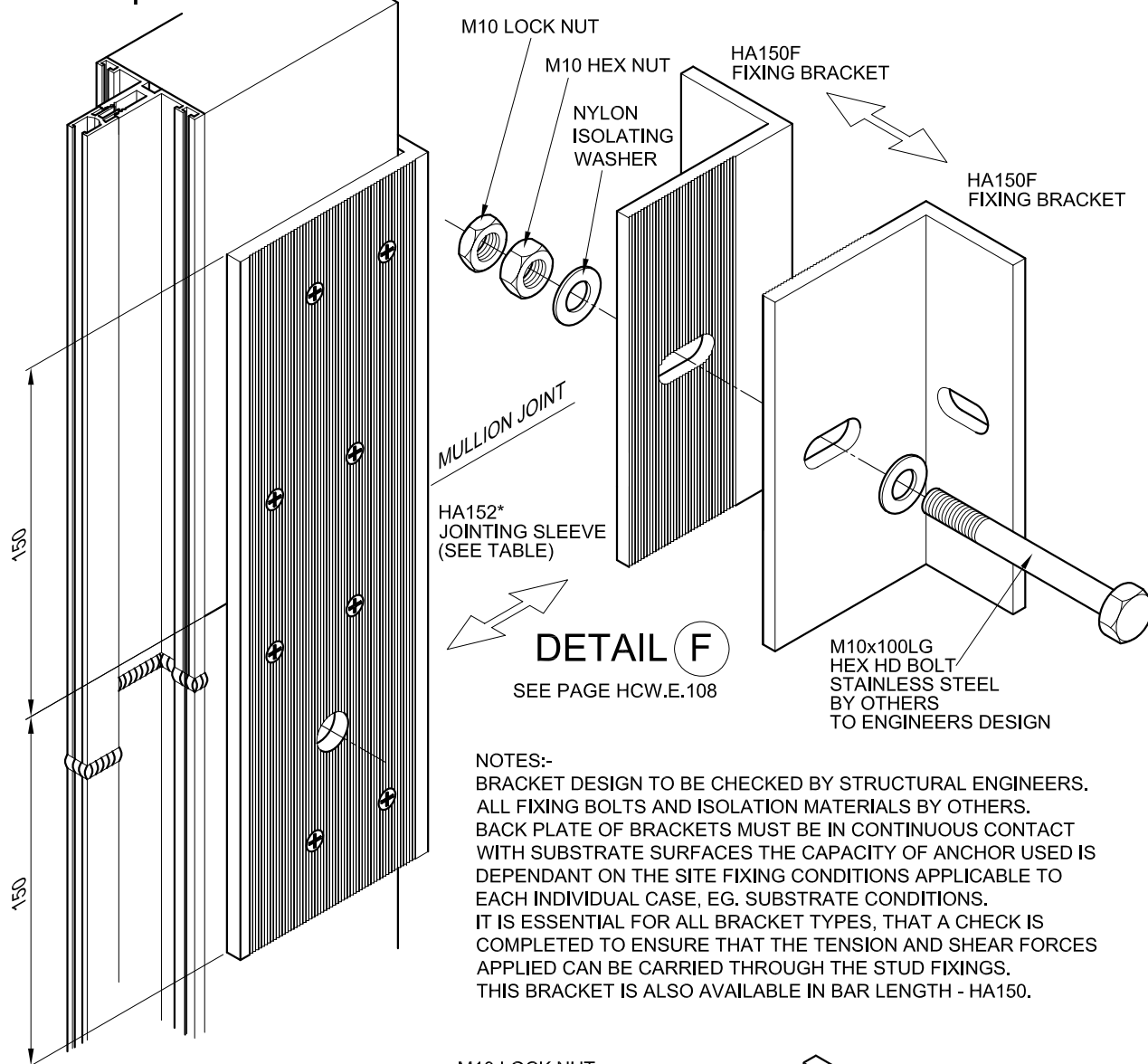


# Hybrid Curtain Wall

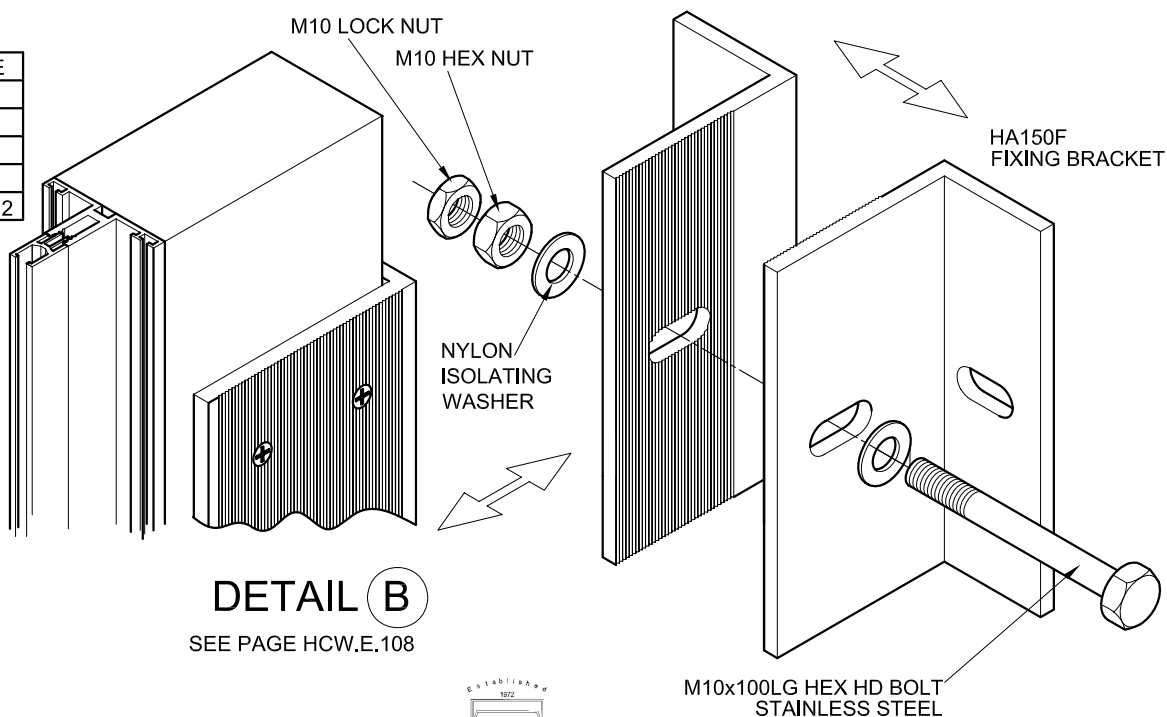
HCW.E.110

## Mullion Splice Joint

10.08



MULLION	SLEEVE
HT50080	HA151
HT50120	HA152
HT50160	HA153
HT50220	HA154
HA50300	HA155 x 2

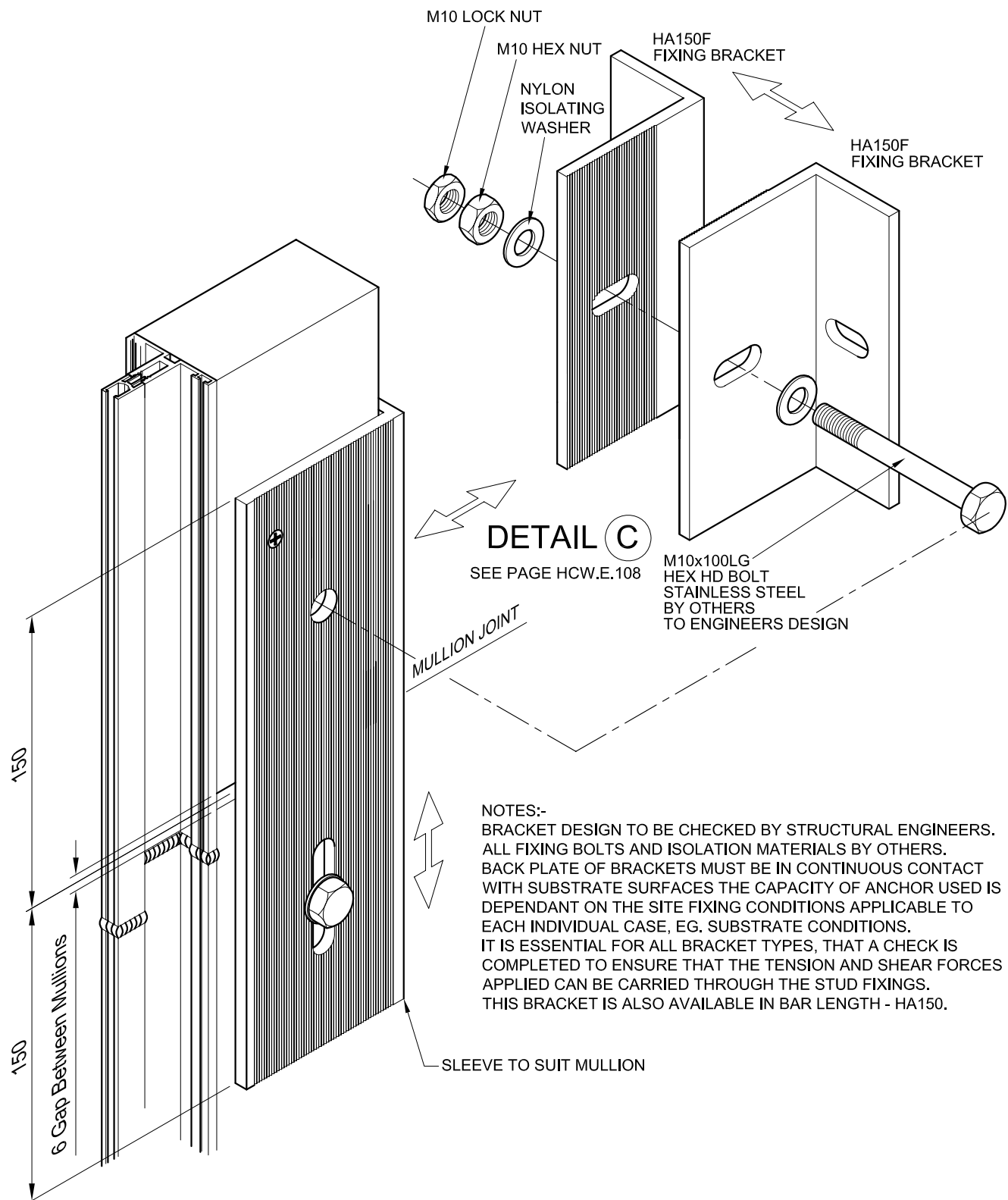


HCW.E.111

08.10

# Hybrid Curtain Wall

## Mullion Movement Joint - Floor Mounted



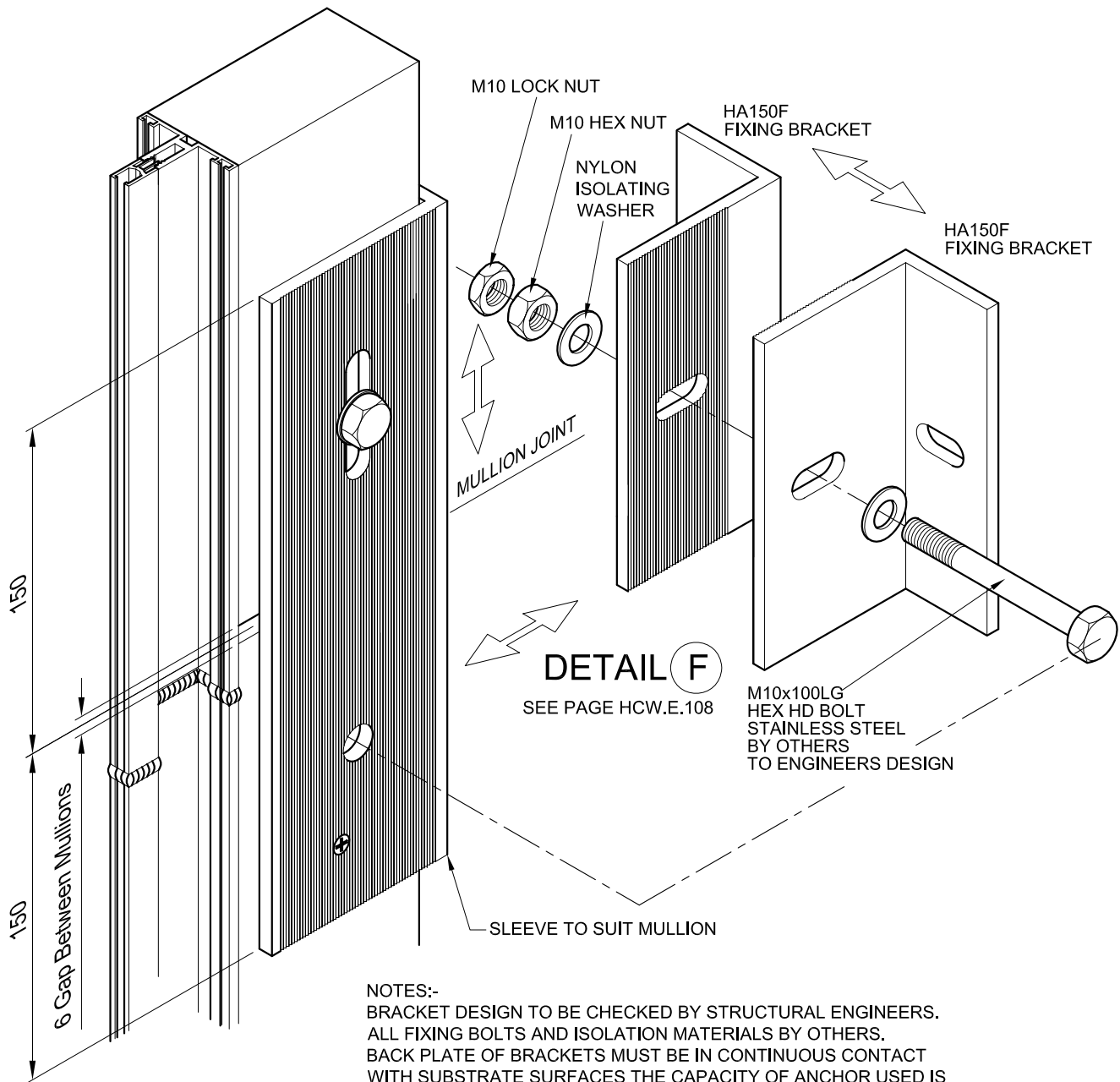
CTW Engineered  
Glazing Systems

# Hybrid Curtain Wall

## Mullion Movement Joint - Suspended

HCW.E.112

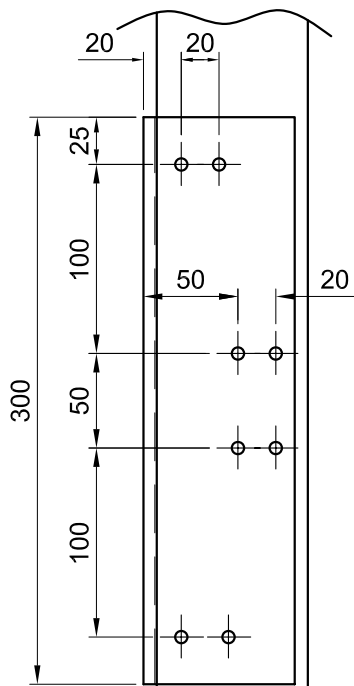
08.10



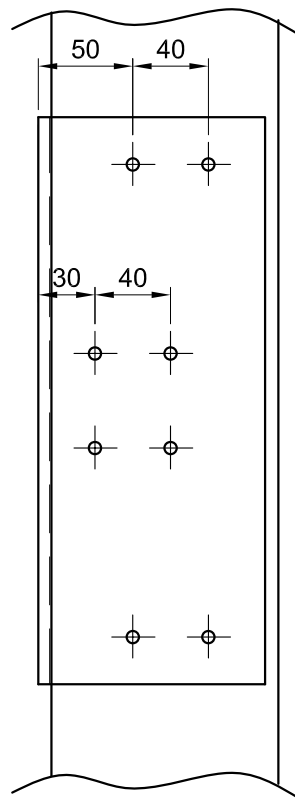
### NOTES:-

BRACKET DESIGN TO BE CHECKED BY STRUCTURAL ENGINEERS.  
ALL FIXING BOLTS AND ISOLATION MATERIALS BY OTHERS.  
BACK PLATE OF BRACKETS MUST BE IN CONTINUOUS CONTACT  
WITH SUBSTRATE SURFACES THE CAPACITY OF ANCHOR USED IS  
DEPENDANT ON THE SITE FIXING CONDITIONS APPLICABLE TO  
EACH INDIVIDUAL CASE, EG. SUBSTRATE CONDITIONS.  
IT IS ESSENTIAL FOR ALL BRACKET TYPES, THAT A CHECK IS  
COMPLETED TO ENSURE THAT THE TENSION AND SHEAR FORCES  
APPLIED CAN BE CARRIED THROUGH THE STUD FIXINGS.  
THIS BRACKET IS ALSO AVAILABLE IN BAR LENGTH - HA150.

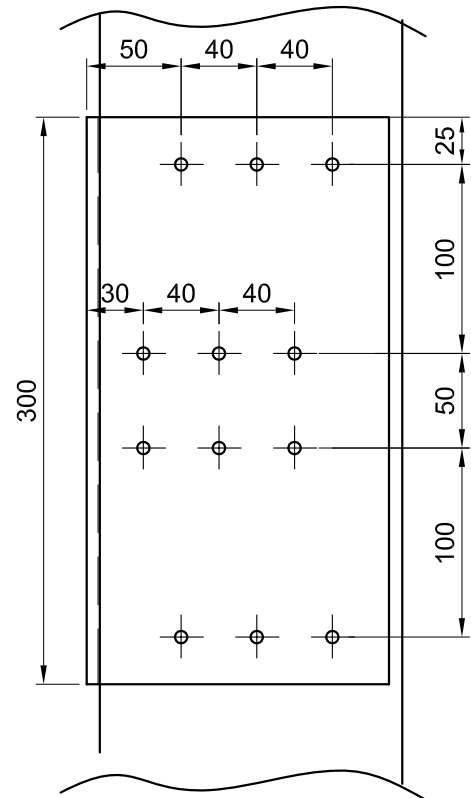




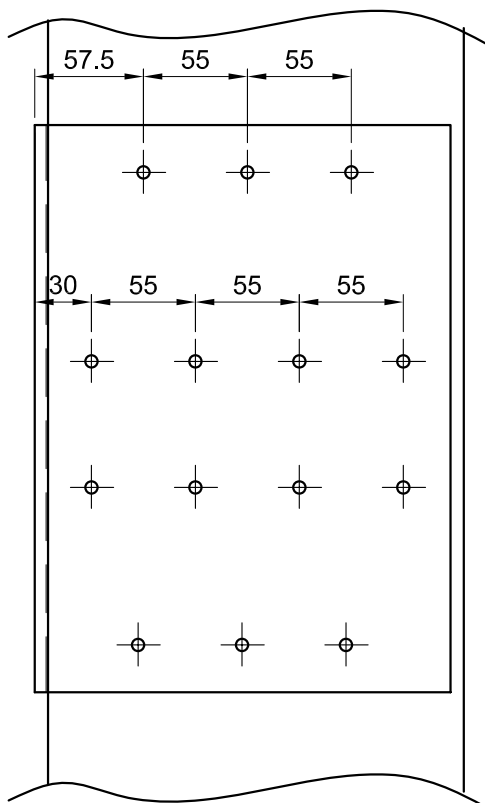
HT50080 For HA151



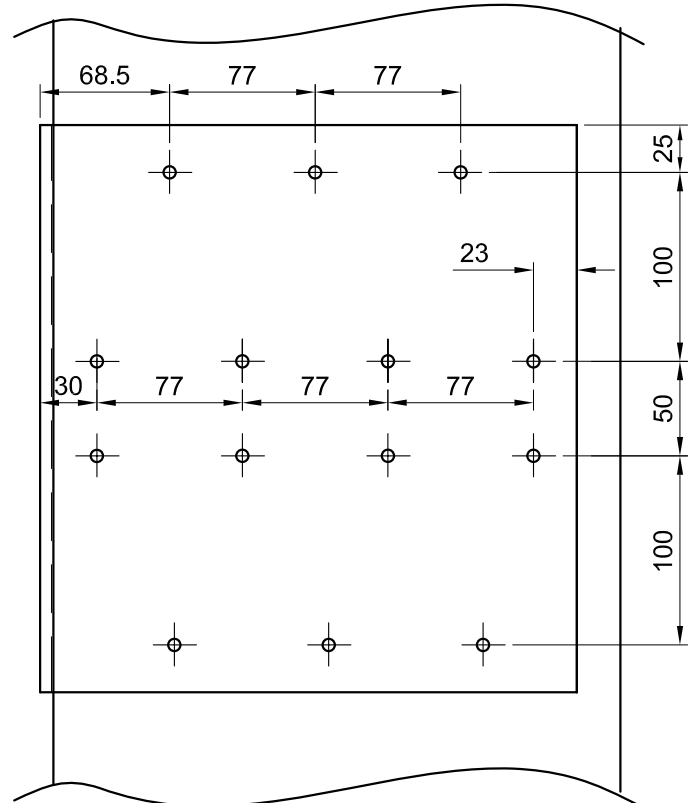
HT50120 For HA152



HT50160 For HA153



HT50220 For HA154



HT50300 For HA155

## Drilling Details For Splice Joint Brackets



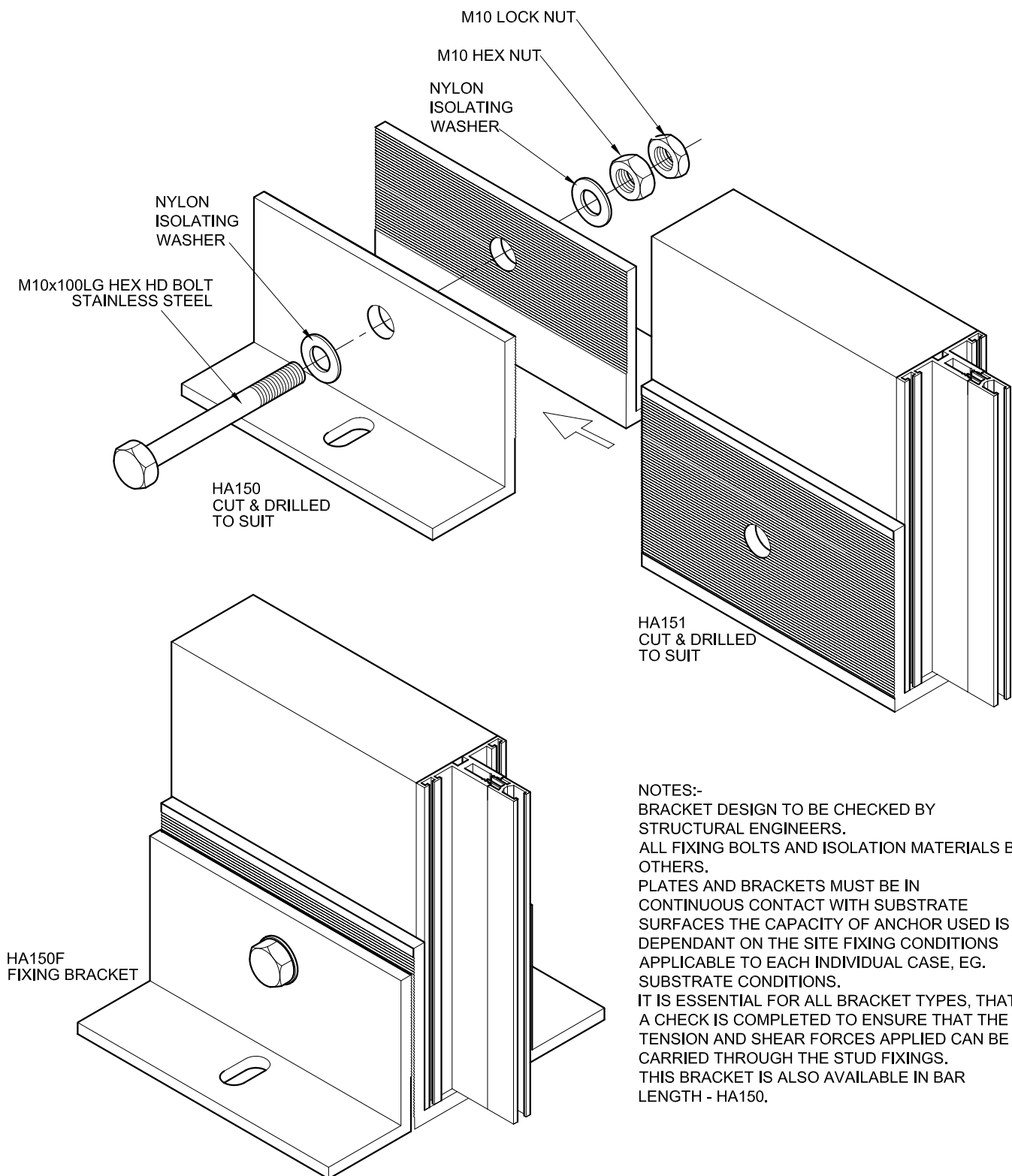


# Hybrid Curtain Wall

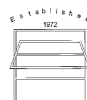
## Cill Fixing Detail

HCW.E.114

08.10



NOTES:-  
BRACKET DESIGN TO BE CHECKED BY STRUCTURAL ENGINEERS.  
ALL FIXING BOLTS AND ISOLATION MATERIALS BY OTHERS.  
PLATES AND BRACKETS MUST BE IN CONTINUOUS CONTACT WITH SUBSTRATE SURFACES THE CAPACITY OF ANCHOR USED IS DEPENDANT ON THE SITE FIXING CONDITIONS APPLICABLE TO EACH INDIVIDUAL CASE, EG. SUBSTRATE CONDITIONS.  
IT IS ESSENTIAL FOR ALL BRACKET TYPES, THAT A CHECK IS COMPLETED TO ENSURE THAT THE TENSION AND SHEAR FORCES APPLIED CAN BE CARRIED THROUGH THE STUD FIXINGS.  
THIS BRACKET IS ALSO AVAILABLE IN BAR LENGTH - HA150.



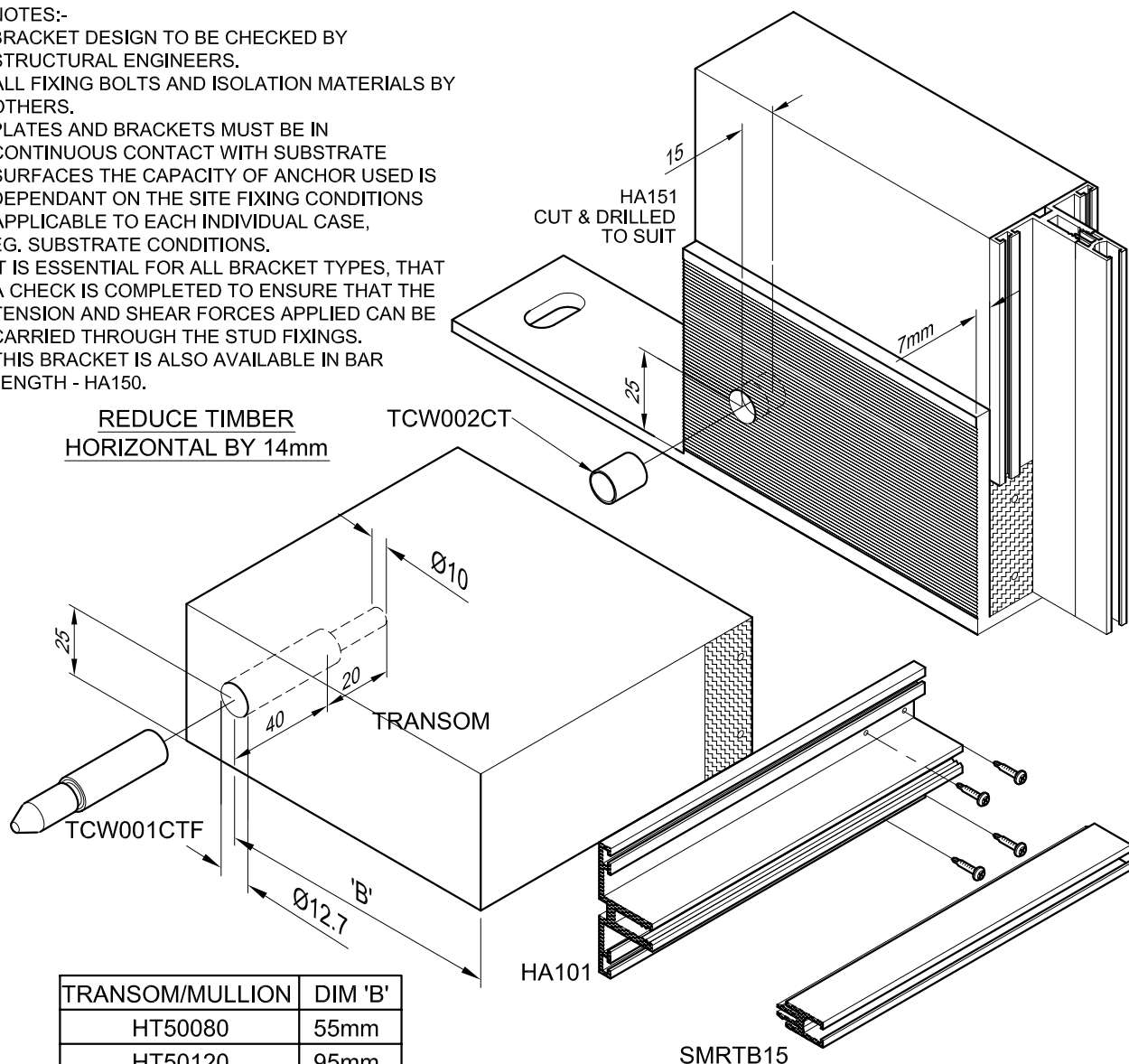
### NOTES:-

BRACKET DESIGN TO BE CHECKED BY STRUCTURAL ENGINEERS.

ALL FIXING BOLTS AND ISOLATION MATERIALS BY OTHERS.

PLATES AND BRACKETS MUST BE IN CONTINUOUS CONTACT WITH SUBSTRATE SURFACES THE CAPACITY OF ANCHOR USED IS DEPENDANT ON THE SITE FIXING CONDITIONS APPLICABLE TO EACH INDIVIDUAL CASE, EG. SUBSTRATE CONDITIONS.

IT IS ESSENTIAL FOR ALL BRACKET TYPES, THAT A CHECK IS COMPLETED TO ENSURE THAT THE TENSION AND SHEAR FORCES APPLIED CAN BE CARRIED THROUGH THE STUD FIXINGS. THIS BRACKET IS ALSO AVAILABLE IN BAR LENGTH - HA150.



TRANSOM/MULLION	DIM 'B'
HT50080	55mm
HT50120	95mm
HT50160	135mm
HT50220	195mm
HT50300	275mm

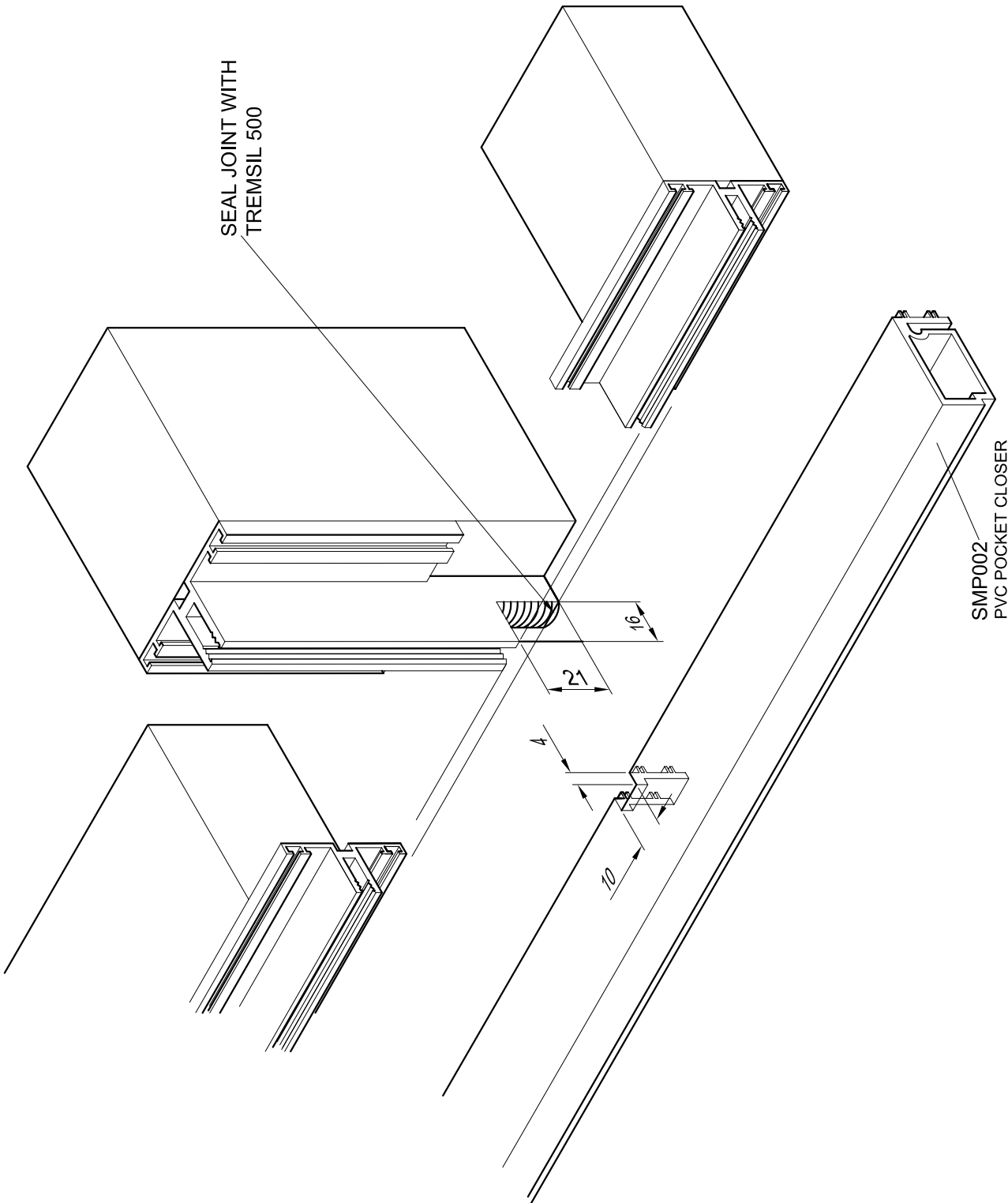


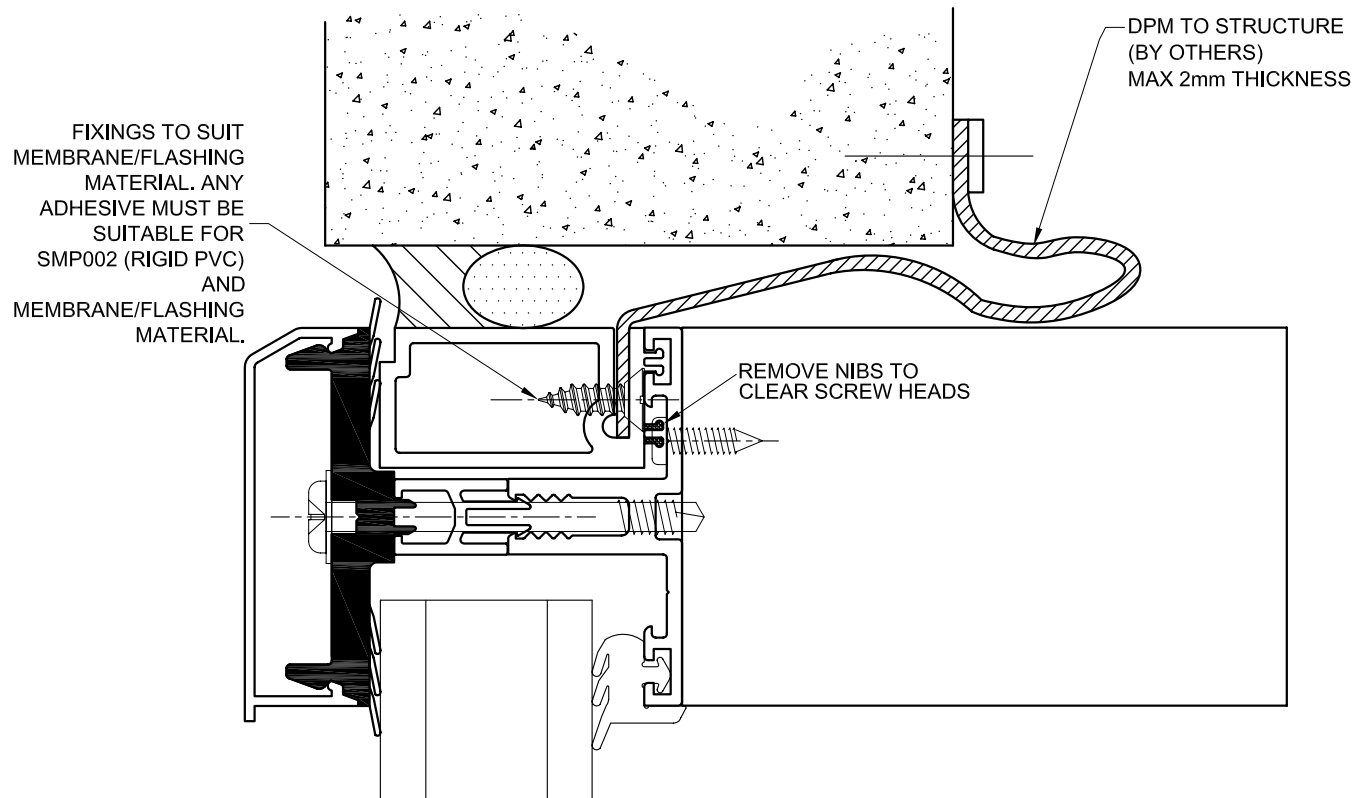
# Hybrid Curtain Wall

HCW.E.116

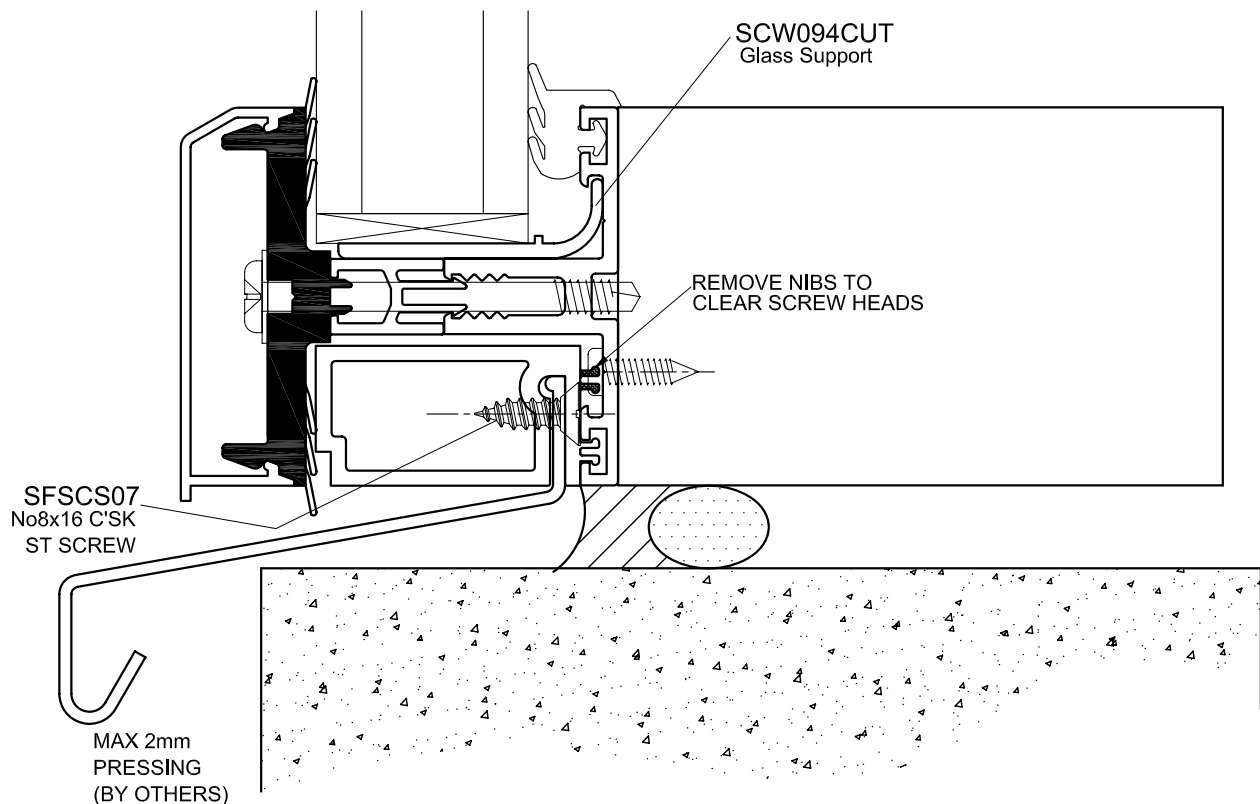
Typical Mullion Detail At Cill

08.10





DETAIL TO SUIT STRUCTURE

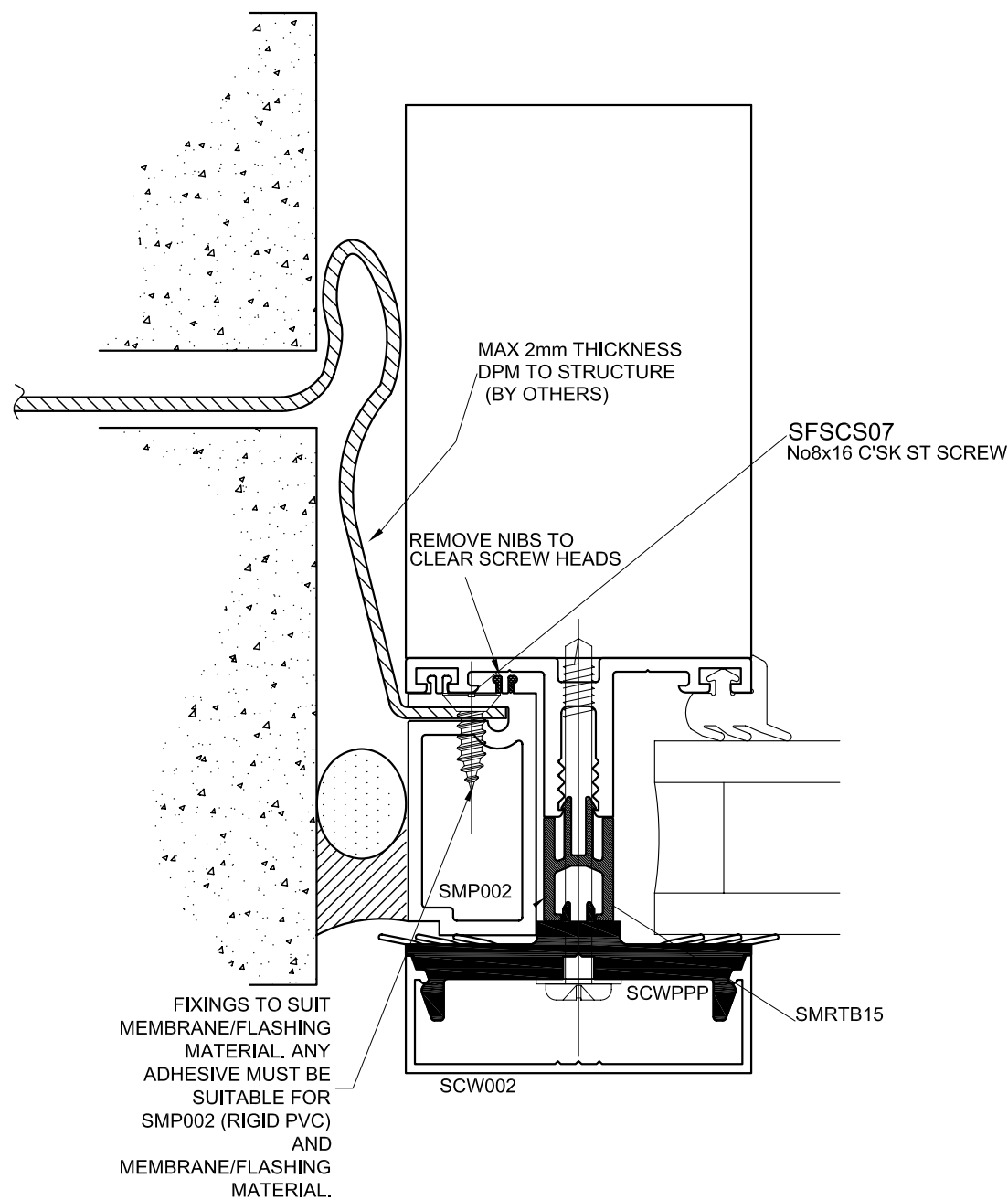


# Hybrid Curtain Wall

## Jamb Detail

HCW.E.118

08.10

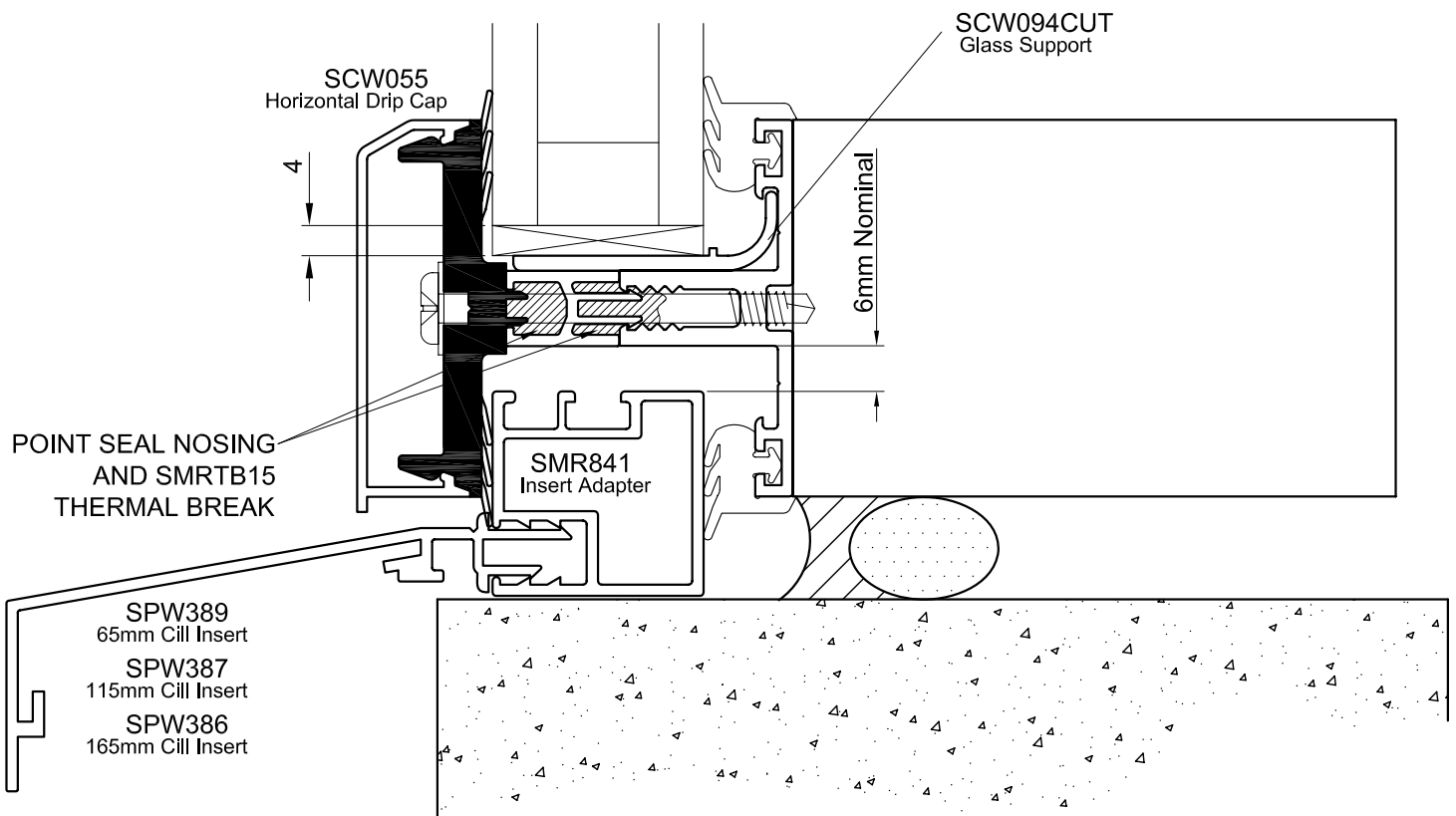
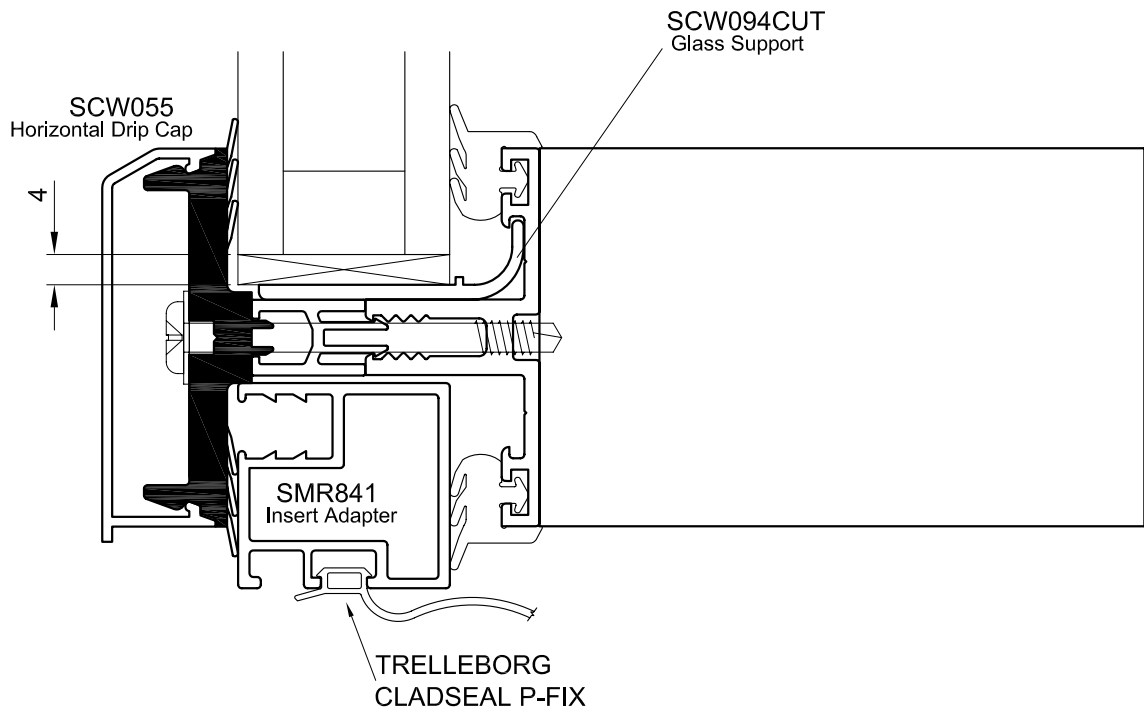


HCW.E.119

08.10

# Hybrid Curtain Wall

## Jamb And Cill Details



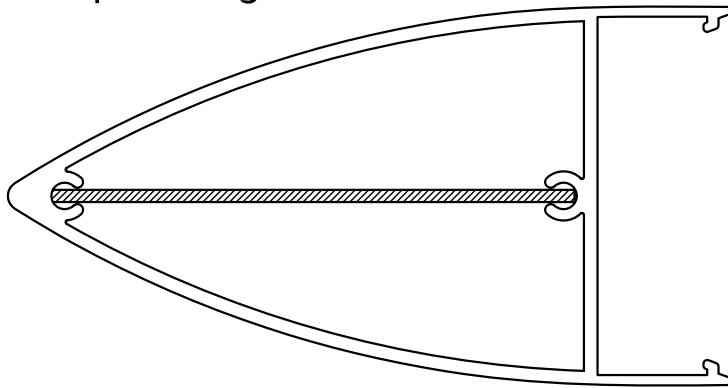
CTW. Engineered  
Glazing Systems

# Hybrid Curtain Wall

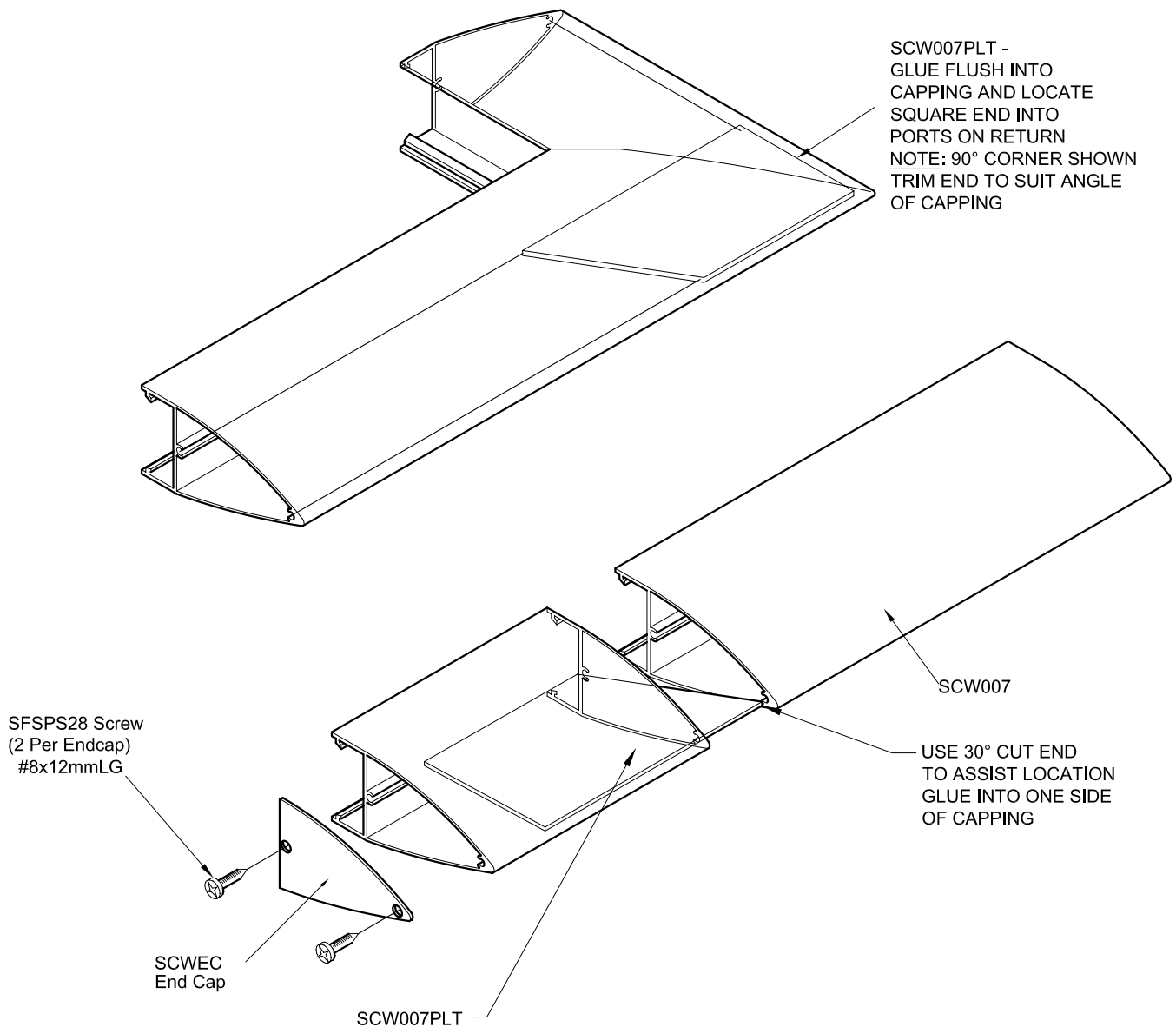
## Aero Foil Cap Joining

HCW.E.120

08.10



SCW007 CAP TO BE FITTED IN 3m LENGTHS MAXIMUM.  
HORIZONTAL PRESSURE PLATES MAY RUN CONTINUOUS  
JOINTS SHOULD BE IN MIDDLE OF TRANSOMS NOT IN LINE  
WITH MULLIONS.



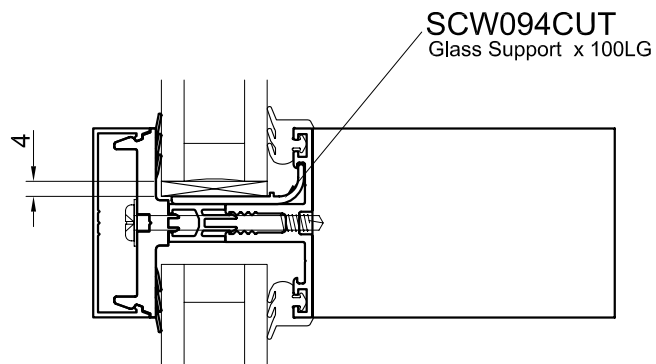
CTW Engineered  
Glazing Systems

HCW.F.101

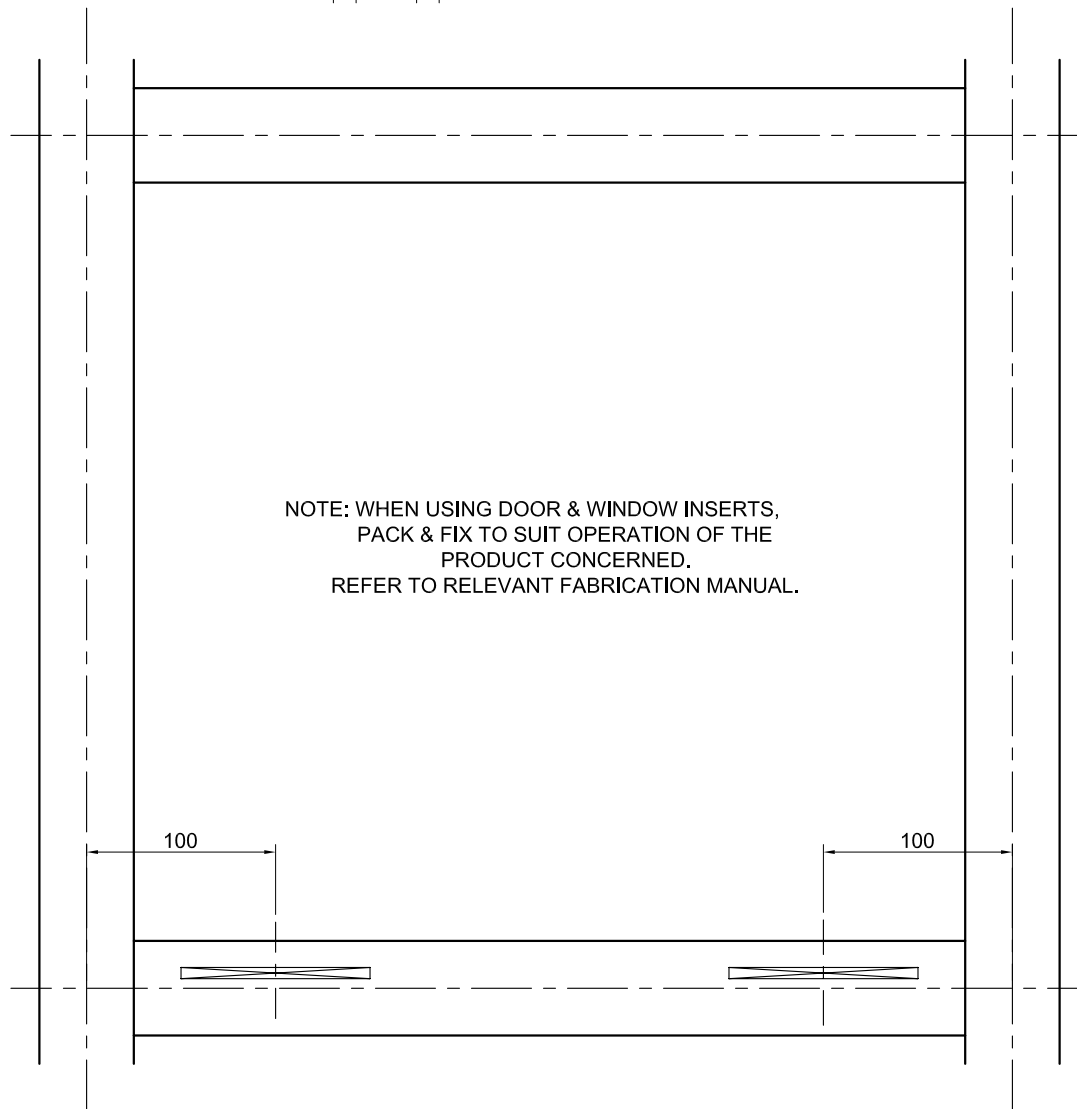
10.08

# Hybrid Curtain Wall

Glass Packing



NOTE: WHEN USING DOOR & WINDOW INSERTS,  
PACK & FIX TO SUIT OPERATION OF THE  
PRODUCT CONCERNED.  
REFER TO RELEVANT FABRICATION MANUAL.



CTW Engineered  
Glazing Systems