



Glass tubing and
rods for architecture,
art and design

We are an international technology group with more than 125 years of experience in the areas of specialty glasses and materials and advanced technologies. With our high-quality products and intelligent solutions, we contribute to our customers' success and make us part of everyone's life. With a production capacity of more than 140,000 tons and production sites in Europe, South America and Asia, our business segment Tubing is one of the world's leading manufacturers of glass tubes, rods and profiles. Approximately 60 glass types are produced in large external diameters and a variety of lengths based on site-overlapping strategies in development, production and quality assurance. Our tubing provides customized products and services for inter-national growth markets such as pharmaceuticals and electronics as well as industrial and environmental engineering.

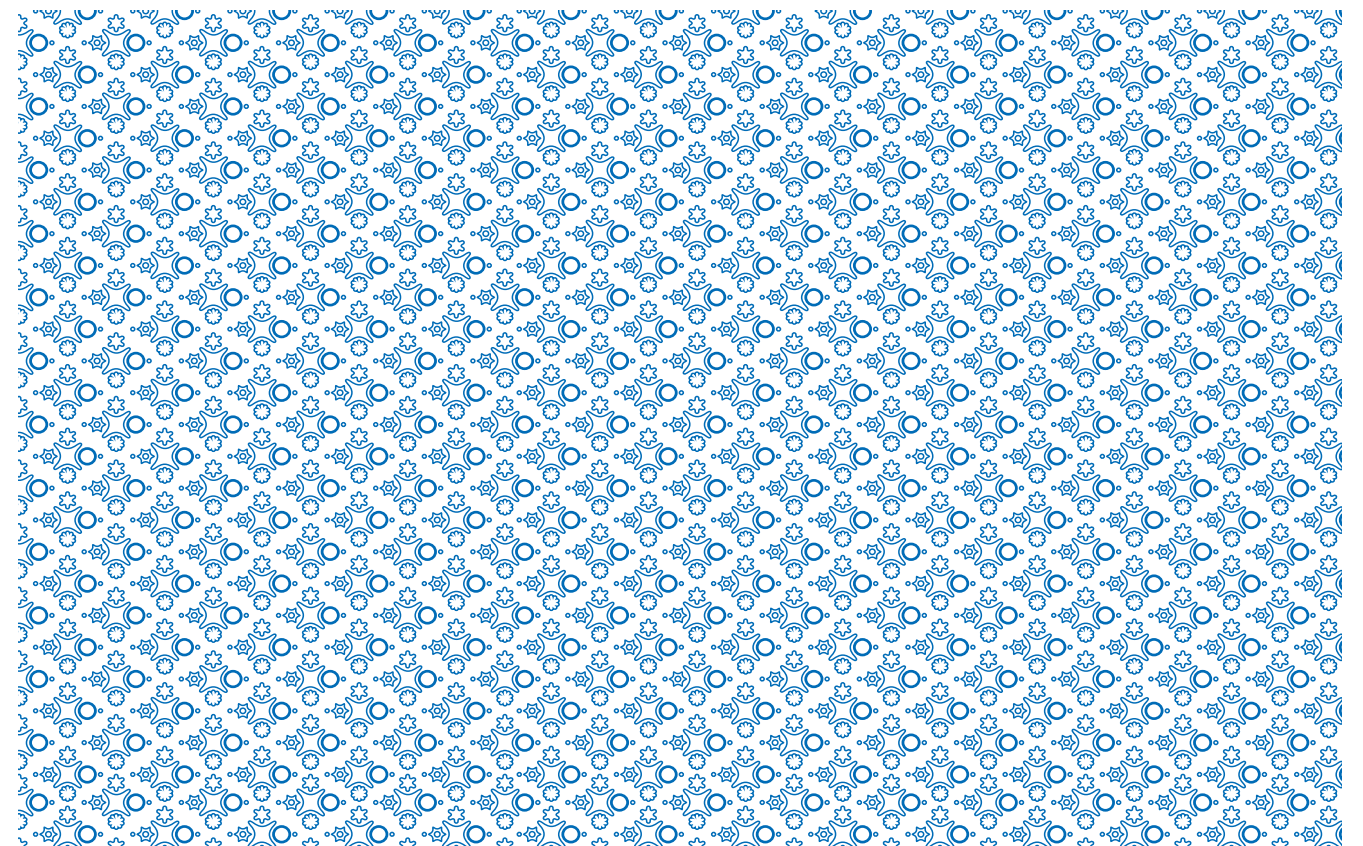
Tubing and rods made of glass for architecture, art and design

CONTURAX®, CONTURAX® Pro, DURAN® and DURATAN® glass tubing and rods offer inspiring and fascinating solutions for architecture, art and design applications.

These profile glass tubing and rods allow high transparency and thermal shock resistance as well as hard, smooth surfaces for the extraordinary resistance to scratches. Furthermore, they enable precise processing due to their geometrical accuracy.

The high standard of quality in combination with an exceptional range of shapes and dimensions provide unlimited possibilities. Open your imagination and explore creative applications of glass tubing and rods on the following pages.

Depending on the type of glass tubing and rods are available in diameters from 3 mm up to 420 mm and length from 600 mm up to 10,000 mm. Other available dimensions upon request.



Our Products

A wide range of tailor made products

Product Benefits

- Wide geometrical dimension range.
- Extremely tight geometrical tolerances and high optical quality.



DURAN®

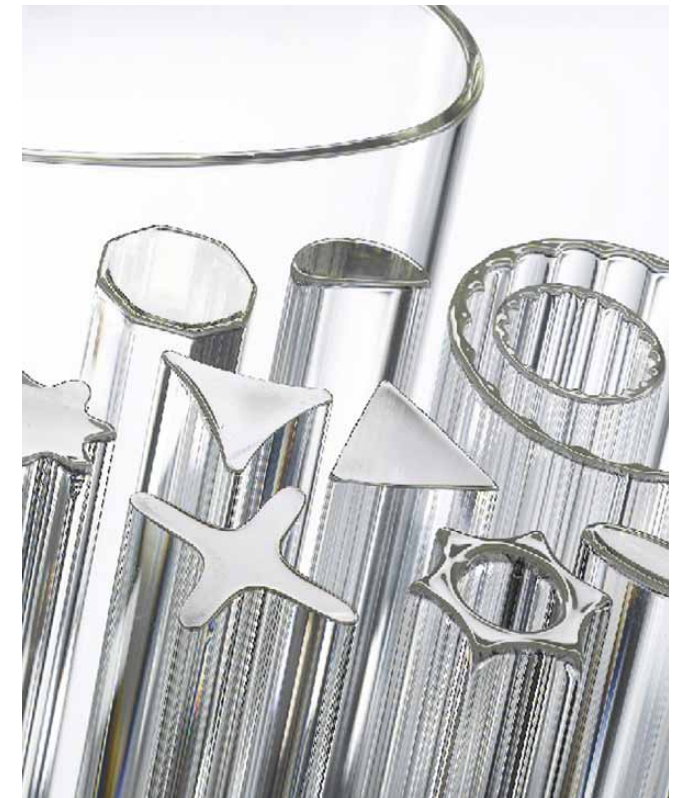
- Highly chemical resistant borosilicate glass with low thermal coefficient of expansion.
- Glass tubes with an outside diameter range from 3 mm up to 420 mm.
- Lengths from 600 mm up to 10,000 mm are possible (depending on outside diameter and wall thickness).
- Technical review.



CONTURAX® and CONTURAX® Pro

- Glass tubes and rods are available in a variety of different shapes.
- Lengths from 1,200 mm up to 4,000 mm are possible (depending on the profile and dimensions).
- Technical review / development of new profiles.

Further details in the enclosed data sheet.



DURATAN®

- Thermal prestressed DURAN®
- Glass tubes with an outside diameter range from 50 mm up to 325 mm possible (depending on wall thickness and length).
- Lengths from 100 mm up to 1,700 mm are possible (depending on outside diameter and wall thickness).
- Minimum wall thickness of 5 mm is needed.



Projects and Impressions



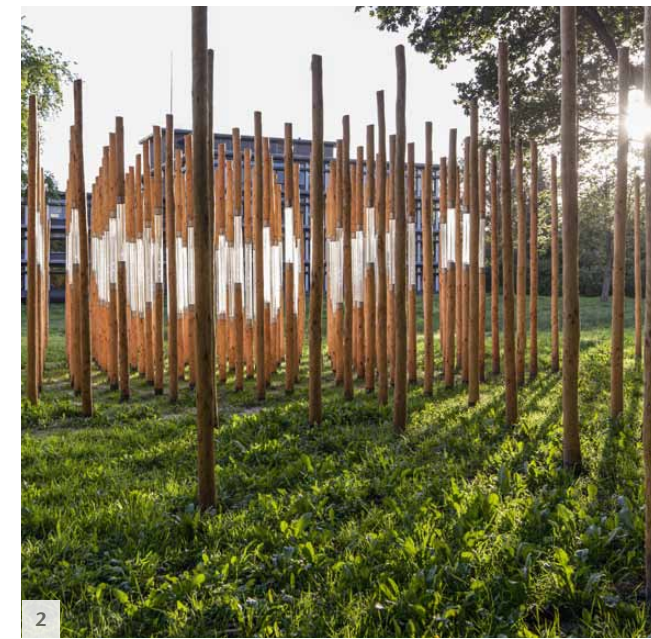
Aurora, London, Great Britain
DURAN®, Artist: Tim Morgan

Art & Design - let your creativity shine



1

Image by Courtesy of Höweler + Yoon Architecture



2

1: AVIARY, Village Dubai Mall, United Arab Emirates
DURAN®, Architect: Höweler + Yoon Architecture



3

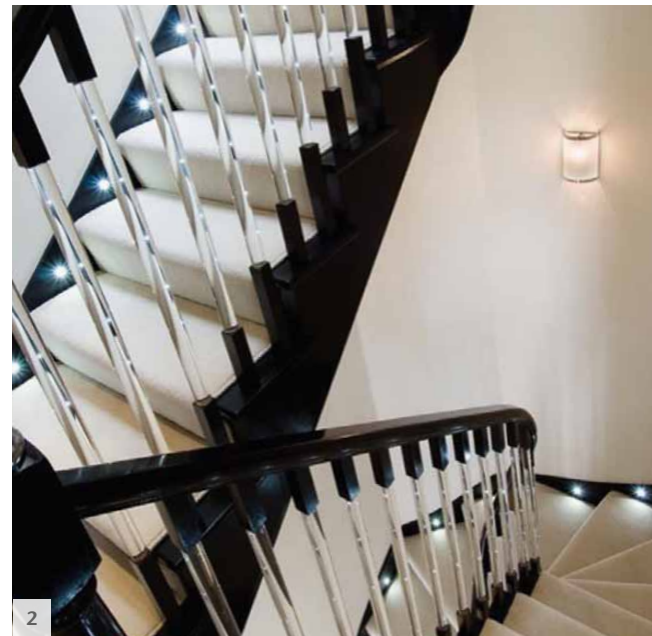
2: The Window of your Eyes, Assen, Netherlands
DURAN®, Artist: Giny Vos
3: Aurora (Detail), London, Great Britain, DURAN®, Artist: Tim Morgan

Interior Design

- contemporary & innovative solutions



1



2



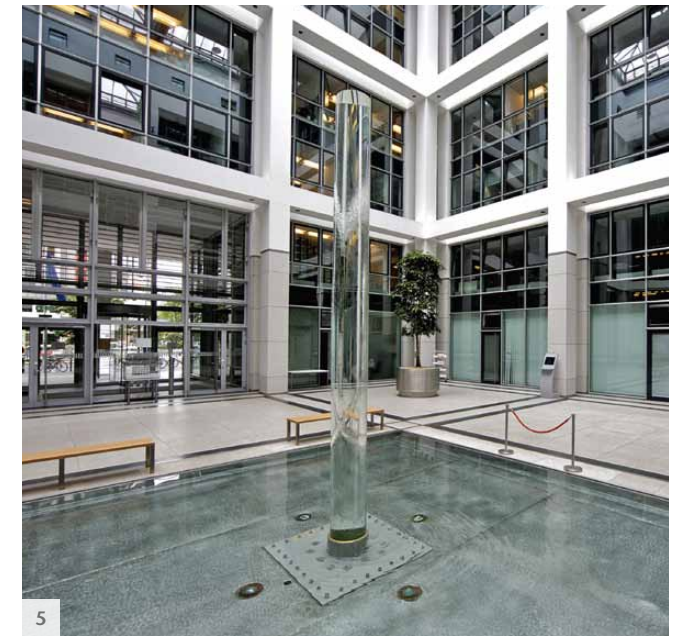
3

1: Glasstec 2012, Glass wall, Germany, CONTURAX® Pro
2: Glass stairrods, London, Great Britain, DURAN® Rods

3: Glasstec 2012, Glass bar, Germany, CONTURAX®



4



5



6

4: Arquia - Caja de Arquitectos, Barcelona, Spain, DURAN®
5: Fountain, Federal Ministry of Health, Germany, DURAN®

6: Walbrook Offices, London, Great Britain
CONTURAX®, Architect: Foster + Partners

Exhibition

- showcase to the highest standards



1: Qela Store, Doha, Qatar
DURATAN®



2: Burrows Jeweller, Great Britain
DURAN®

Lighting

- unique & unlimited lighting concepts



1: Technical Glass Solutions GmbH, Jena, Germany DURAN®

2: HILT, Switzerland
CONTURAX® Pro

External Architecture

- inspirational designs - make your visions a reality



1/2: Perfecta door, Germany, CONTURAX®Pro
3: Perfecta window, Germany, CONTURAX®Pro

4: Shadow System for Facades, CONTURAX®Pro
5: Shadow System for Facades - design examples, CONTURAX®Pro



We Offer

- **Service and support**
From the inquiry stage right through to delivery our customers receive expert consulting every step of the way.
- **Safety packaging**
The extremely high standard of packaging enables the safety of our products whilst being environmentally friendly.
- **Excellent contacts for further processing**
Our network provides you with company contacts for coloring, laser printing, sandblasting, drilling and sawing.
- **A large dimension range**
We offer almost endless possibilities to suit your requirements.
- **Flexibility**
Highly flexible to meet our customers needs and request.
- **Continuous technical development**
Our know how ensures our customers always receive the highest technical standard of our products.



Product ideas with our glass tubing and rods

Create it with glass

Our glass tubing and rods offer a wide range of options for creative ideas and extraordinary product innovations. There are almost no limits and the possibilities in size and shape do not end with the mentioned figures. Upon request we will find the perfect solution for your ideas and projects. The only thing you have to do - create it with glass!